



Monthly Report on Short-term Transactions of Electricity in India

November, 2020



Economics Division
Central Electricity Regulatory Commission
36, Janpath, Chanderlok Building



Contents

S.No.	Contents	Page No
	Contents	i
	List of Tables and Figures	ii
	Abbreviations	iii
1	Introduction	1
2	Volume of Short-term Transactions of Electricity	1
3	Price of Short-term Transactions of Electricity	3
3.1	<i>Price of electricity transacted through Traders</i>	3
3.2	<i>Price of electricity transacted through Power Exchanges</i>	3
3.3	<i>Price of electricity transacted through DSM</i>	3
4	Trading Margin	3
5	Volume of Short-term Transactions of Electricity (Regional Entity-wise)	4
6	Congestion on Inter-State Transmission Corridor for Day-Ahead Market and Real Time Market on Power Exchanges	5
7	Volume and Price of Renewable Energy Certificates (RECs)	5
8	Inferences	6

List of Tables and Figures

S. No.	List of Tables and Figures	Page No.
I List of Tables		
Table-1	Volume of Short-term Transactions of Electricity in India	8
Table-2	Percentage Share of Electricity Transacted by Trading Licensees	10
Table-3	Price of Electricity Transacted through Traders	11
Table-4	Price of Electricity Transacted through Traders (Time-wise)	11
Table-5	Price of Electricity Transacted in Day Ahead Market through Power Exchanges	11
Table-6	Price of Electricity Transacted in Real Time Market through Power Exchanges	11
Table-7	Volume and Price of Electricity in Term Ahead Market of IEX	12
Table-8	Volume and Price of Electricity in Term Ahead Market of PXIL	12
Table-9	Volume and Price of Electricity in Green Term Ahead Market of IEX	12
Table-10	Price of Electricity Transacted through DSM	12
Table-11	Volume of Electricity Sold through Bilateral	14
Table-12	Volume of Electricity Purchased through Bilateral	15
Table-13	Volume of Electricity Sold in Day Ahead Market through Power Exchanges	16
Table-14	Volume of Electricity Purchased in Day Ahead Market through Power Exchanges	18
Table-15	Volume of Electricity Sold in Real Time Market through Power Exchanges	19
Table-16	Volume of Electricity Purchased in Real Time Market through Power Exchanges	21
Table-17	Volume of Electricity Under drawal through DSM	22
Table-18	Volume of Electricity Over drawal through DSM	25
Table-19	Total Volume of Net Short-term Transactions of Electricity (Regional Entity-wise)	28
Table-20	Details of Congestion in Power Exchanges	31
Table-21	Volume of Short-term Transactions of Electricity in India (Day-wise)	32
Table-22	Price of Electricity in Day Ahead Market and DSM (Day-wise)	33
Table-23	Price of Electricity in Real Time Market (Day-wise)	34
Table-24	Volume of Short-term Transactions of Electricity (Regional Entity-wise)	35
II List of Figures		
Figure-1	Volume of Various Kinds of Electricity Transactions in Total Electricity Generation	8
Figure-2	Volume of Short-term Transactions of Electricity	8
Figure-3	Volume transacted in different markets segments on Power Exchanges	9
Figure-4	Volume of Short-term Transactions of Electricity (Day-wise)	9
Figure-5	Percentage Share of Electricity Transacted by Trading Licensees	10
Figure-6	Price of Short-term Transactions Electricity	13
Figure-7	Price of Short-term Transactions Electricity (Day-wise)	13

Abbreviations

Abbreviation	Expanded Version
ABSP_ANTP	Acme Bhiwadi Solar Power Private Limited, Anantpur
ACBIL	ACB (India) Limited
ACP	Area Clearing Price
ACV	Area Clearing Volume
ACME_SLR	ACME Solar Power Project
ACME_RUMS	Acme Rewa Ultra Mega Solar Project
ADANI GREEN	Adani Green Energy Limited
ADY1_PVGD	Adyah Solar Energy Pvt Ltd., Block 1 Pavagada Solar Park
ADY2_PVGD	Adyah Solar Energy Pvt Ltd., Block 2 Pavagada Solar Park
ADY3_PVGD	Adyah Solar Energy Pvt Ltd., Block 3 Pavagada Solar Park
ADY6_PVGD	Adyah Solar Energy Pvt Ltd., Block 6 Pavagada Solar Park
ADY10_PVGD	Adyah Solar Energy Pvt Ltd., Block 10 Pavagada Solar Park
ADY13_PVGD	Adyah Solar Energy Pvt Ltd., Block 13 Pavagada Solar Park
AGEMPL BHUJ	Adani Green Energy (MP) Ltd., Bhuj
AHSP_ANTP	Acme Hisar Solar Power Private Limited, Anantpur
AKS_PVGD	ACME Kurukshetra Solar Energy Pvt. Ltd
AKSP_ANTP	Acme Karnal Solar Power Private Limited, Anantpur
ALFANAR_BHUJ	Alfanar Group Wind Project, Bhuj, Gujarat
AMPS Hazira	Arcelor Mittal Nippon Steel, Hazira
APTEL	Appellate Tribunal for Electricity
ARERJL_SLR	Adani Renewable Energy Park Rajasthan Ltd.
ARINSUM_RUMS	Solenergi Rewa Ultra Mega Solar Project
ARS_PVGD	ACME REWARI Solar Power Pvt Ltd.
ASEJTL_SLR	Adani Solar Energy Jodhpur Two Ltd.
AVAADA1_PVGD	Avaada Solar Energy Private Ltd., Pavagada Project 1
AVAADA2_PVGD	Avaada Solar Energy Private Ltd., Pavagada Project 2
AYANA_NPKUNTA	Ayana Power, NP Kunta
AZURE_ANTP	Azure Power, Anantpur
AZURE_PVGD	Azure Power, Pavagada
AZURE_SLR	Azure Power Solar Power Project
AZURE34_SLR	Azure Power 34 Pvt. Ltd. Solar Power Project
BALCO	Bharat Aluminum Company Limited
BARC	Bhabha Atomic Research Centre
BBMB	Bhakra Beas Management Board
BETAM_TCN	Betam Wind Energy Private Limited, Tuticorin
BHADRAVATHI HVDC	Bhadravathi High Voltage Direct Current Link
BRBCL	Bhartiya Rail Bijlee Company Limited
CEA	Central Electricity Authority
CERC	Central Electricity Regulatory Commission
CGPL	Coastal Gujarat Power Limited
CHUKHA HEP	Chhukha Hydroelectric Project, Bhutan
CHUZACHEN HEP	Chuzachen Hydro Electric Power Project
CLEAN_SLR	Clean Solar Power Pvt. Ltd
COASTGEN	Coastal Energen Private Limited
DAGACHU	Dagachhu Hydro Power Corporation
DAM	Day Ahead Market
DB POWER	Diligent Power Pvt. Ltd.
DCPP	Donga Mahua Captive Power Plant

DGEN MEGA POWER	DGEN Mega Power Project
DHARIWAL POWER	Dhariwal Power Station
DIKCHU HEP	Dikchu Hydro-electric Project, Sikkim
DOYANG HEP	Doyang Hydro Electric Project
DSM	Deviation Settlement Mechanism
DVC	Damodar Valley Corporation
EMCO	EMCO Energy Limited
ESSAR POWER	Essar Power Limited
ESSAR STEEL	Essar Steel Ltd
FORTUM1_PVGD	Fortum Finnsurya Energy Private Ltd, Pavagada Project 1
FORTUM2_PVGD	Fortum Finnsurya Energy Private Ltd, Pavagada Project 2
FRV_ANTP	Fotowatio Renewable Ventures, Anantapur
FRV_NPK	Fotowatio Renewable Ventures,N P Kunta
GIWEL_BHUI	Green infra wind energy Limited, Bhuj
GIWEL_TCN	Green Infra Wind Energy Limited,Tuticorin
GMR CHHATTISGARH	GMR Chhattisgarh Energy Limited
GMR KAMALANGA	GMR Kamalanga Energy Ltd.
G-TAM	Green Term Ahead Market
HVDC ALPD	Alipurduar High Voltage Direct Current Link
HVDC CHAMPA	Champa-Kurukshetra High Voltage Direct Current Link
HVDC PUS	Pasauli High Voltage Direct Current Link
HVDC RAIGARH	Raigarh-Pugalur High Voltage Direct Current Link
IEX	Indian Energy Exchange Limited
IGSTPS	Indira Gandhi Super Thermal Power Station Jhajjar
IL&FS	Infrastructure Leasing & Financial Services Limited
INOX_BHUI	INOX Wind Limited, Bhuj, Gujarat
J&K	Jammu & Kashmir
JAYPEE NIGRIE	Jaypee Nigrie Super Thermal Power Project
JHABUA POWER MP	Jhabua Thermal Power Project
JINDAL POWER	Jindal Power Limited
JINDAL STAGE-II	Jindal Power Ltd Stage II
JITPL	Jindal India Thermal Power Ltd.
JORETHANG	Jorethang Loop Hydroelectric Power Project
KAPP 3&4	Kakrapar Atomic Power Station Unit 3 & 4
KARCHAM WANGTOO	Karcham Wangtoo H.E. Project
KORBA WEST POWER	Korba West Power Company Limited
KOTESHWAR	Koteshwar Hydro Power project
KREDL_PVGD	Karnataka Renewable Energy Development Ltd, Pavagada
KSK MAHANADI	KSK Mahanadi Power Ltd
KSMPL_SLR	Kilaj Solar (Maharashtra) Private Limited
KURICHU HEP	Kurichhu Hydro-electric Power Station, Bhutan
LANKO_AMK	Lanco Amarkantak Power Private Limited
LANKO BUDHIL	Lanco Budhil Hydro Power Private Limited
LANKO KONDAPALLY	Lanco Kondapally Power Private Limited
LOKTAK	Loktak Power Project
MAHINDRA_RUMS	Mahindra Rewa Ultra Mega Solar Project
MAHOBASL	Mahoba Solar Power Project
MALANA	Malana Hydroelectric Plant
MANGDECHU HEP	Mangdechhu Hydroelectric Project, Mangdechhu River, Bhutan
Maruti Coal	Maruti Clean Coal and Power Limited

MB POWER	MB Power Ltd
MEENAKSHI	Meenakshi Energy Private Limited
MP	Madhya Pradesh
MTPS II	Muzaffarpur Thermal Power Station – Stage II
MYTRAH_TCN	Mytrah Energy (India) Private Limited, Tuticorin
Mus	Million Units
NAPP	Narora Atomic Power Plant
NEEPCO	North Eastern Electric Power Corporation Limited
NEP	Nepal
NFL	National Fertilisers Limited
NHPC STATIONS	National Hydro Electric Power Corporation Ltd. Stations
NJPC	Nathpa Jhakri Hydroelectric Power Station
NLC	Neyveli Lignite Corporation Limited
NLDC	National Load Dispatch Centre
NPGC	Nabinagar Power Generating Company (Pvt.) Limited
NSPCL	NTPC - SAIL Power Company Private Limited
NTECL Vallur	NTPC Tamil Nadu Energy Company Limited Vallur
NTPC_ANTP	NTPC Anantapur
NTPC STATIONS	National Thermal Power Corporation Ltd. Stations
NTPL	NLC Tamil Nadu Power Limited
NVVN	NTPC Vidyut Vyapar Nigam Limited
ONGC Platana	ONGC Tripura Power Company
OPGC	Odisha Power Generation Corporation
ORANGE_TCN	Orange Renewable Power Pvt. Ltd, Tuticorin
OSTRO	Ostro Energy Private Limited
OTC	Over The Counter
PARAM_PVGD	Parampujya Solar Energy Private Ltd
PARE HEP	Pare hydroelectric project, Arunachal Pradesh
PX	Power Exchange
PXIL	Power Exchange India Limited
RAIL	Indian Railways
RAMPUR HEP	Rampur Hydro Electric Power Project
RANGIT HEP	Rangit Hydroelectric power project
RANGANADI HEP	Ranganadi Hydro Electric Power Project, Arunachal Pradesh
RAP-B	Rajasthan Atomic Power Plant-B
RAP-C	Rajasthan Atomic Power Plant-C
REC	Renewable Energy Certificate
REGL	Raigarh Energy Generation Limited
RENEW_BHACHAU	ReNew Power Limited, Bhachau
RENEW_BHUJ	ReNew Power Limited, Bhuj
RENEW_PVGD	ReNew Wind Energy (TN2) Private Limited
RENEW_SLR	Renew Solar
RENEW_SLR_BKN	Renew Solar Bikaner
RGPPL_IR	Ratnagiri Gas and Power Private Ltd., supply to Indian Railways
RGPPL_OTHER	Ratnagiri Gas and Power Private Limited
RLDC	Regional Load Dispatch Centre
RPREL	Raipur Energen Limited
RTC	Round The Clock
RTM	Real Time Market
Sasan UMPP	Sasan Ultra Mega Power Project

SB_SLR	Soft Bank Solar
SBG_CLEANTECH_SLR	SBG Cleantech Ltd
SBG_NPK	SB Energy Solar Private Limited, NP Kunta
SBG_PVGD	SB Energy Solar Private Limited, Pavagada
SEMBCORP	Sembcorp Gayatri Power Ltd
SHREE CEMENT	Shree Cement Limited
SIMHAPURI	Simhapuri Energy Private Limited
SKS Power	SKS Power Generation Chhattisgarh Limited
SINGOLI BHATWARI HEP	Singoli-Bhatwari Hydroelectric Project, Uttarakhand
SPECTRUM	Spectrum Power Generation Ltd
SPRNG_NPKUNTA	Sprng Energy, NP Kunta
TALA HEP	Tala Hydroelectric Project, Bhutan
TASHIDENG HEP	Tashiding Hydro Electric Project, Sikkim
TATA_ANTP	TATA Power Anantapur
TATA_PVGD	Tata Power Renewable Energy Ltd
TATA_SLR	Tata Solar
TEESTA STG3	Teesta Stage 3 Hydro Power Project
TEHRI	Tehri Hydro Electric Power Project
TAM	Term Ahead Market
THERMAL POWERTECH	Thermal Powertech Corporation India Limited
URI-II	Uri-II Hydropower Project
VINDHYACHAL HVDC	Vindhyachal High Voltage Direct Current Link
YARROW_PVGD	Yarrow Infra Structure Private Ltd

1. Introduction

1.1. A well-functioning electricity market requires an effective market monitoring process. As part of the market monitoring process, the monthly report on short-term transactions of electricity, is being prepared and posted on the website of CERC since August 2008. Here, “short-term transactions of electricity” refers to the contracts of less than one year period, for electricity transacted (inter-State) through inter-State Trading Licensees and directly by the Distribution Licensees, Power Exchanges (Indian Energy Exchange Ltd (IEX) and Power Exchange India Ltd (PXIL), and Deviation Settlement Mechanism (DSM). The objectives of the report are: (i) to observe the trends in volume and price of the short-term transactions of electricity; (ii) to analyse competition among the market players; (iii) to analyse effect of congestion on volume of electricity transacted through power exchanges; (iv) to provide information on volume and price of Renewable Energy Certificates (RECs) transacted through power exchanges; and (v) to disclose/disseminate all relevant market information. The details of the report for the month of **November, 2020** are as under:

2. Volume of Short-term Transactions of Electricity

2.1. During November 2020, total electricity generation excluding generation from renewable and captive power plants in India was 95302.83 MUs (Table-1). Of the total electricity generation, 12.40% was transacted through short-term, comprising of 6.09% through Day Ahead Market (DAM) and Real Time Market (RTM) of power exchanges, followed by 4.38% through bilateral (through traders and term-ahead contracts on power exchanges and directly between distribution companies) and 1.93% through DSM (Table-1 & Figure-1).

2.2. Of the total short-term transactions (11813.50 MUs), the electricity transacted in DAM and RTM of power exchanges constitutes 49.12%, followed by 35.31% through bilateral (21.59% through traders and term-ahead contracts on power exchanges and 13.72% directly between distribution companies) and 15.57% through DSM (Table-1 & Figure-2). Daily volume of short-term transactions is shown in Table-21 & Figure-4.

2.3. Of the total volume of electricity transacted through power exchanges, 69.31% of the volume was transacted in DAM, followed by 18.08% in Term Ahead Market (TAM) and 12.62% in RTM (Figure-3).

2.4. The percentage share of electricity traded by each trading licensee in the total volume of electricity traded by all the trading licensees is provided in Table-2 & Figure-5. The volume of electricity transacted by the trading licensees includes bilateral transactions and the transactions undertaken through power exchanges. There were 34 trading licensees as on November 2020. In November 2020, 24 trading licensees were engaged in short term trading. Top 5 trading licensees had a share of 83.86% in the total volume traded by all the licensees. These are PTC India Ltd., Adani Enterprises Ltd., Manikaran Power Ltd., NTPC Vidyut Vyapar Nigam Ltd. and GMR Energy Trading Ltd.

2.5. Herfindahl-Hirschman Index (HHI) has been used for measuring the competition among the trading licensees. Increase in the HHI generally indicates decrease in competition and increase of market concentration, and vice versa. The HHI below 0.15 indicates non-concentration, HHI between 0.15 and 0.25 indicates moderate concentration and HHI above 0.25 indicates high concentration. The HHI has been computed based on the volume of electricity traded (inter-State & intra-State) by inter-State trading licensees, and it was 0.2419 for the month of November 2020, which indicates moderate concentration of market power (Table-2).

2.6. The volume of electricity transacted in the DAM of IEX and PXIL was 4860.46 MUs and 48.62 MUs respectively. The volume of total buy bids and sell bids was 5520.45 MUs and 9777.76 MUs respectively in IEX, while the same was 59.69MUs and 194.81 MUs respectively in PXIL.

2.7. The volume of electricity transacted in the RTM of IEX was 893.62 MUs. No electricity was transacted in the RTM of PXIL. The volume of total buy bids and sell bids was 1094.10 MUs and 2513.18 MUs respectively in IEX, while there were no bids in PXIL. The variation in the volume of buy bids and sell bids placed through power exchanges shows variation in the demand and supply position.

2.8. The volume of electricity transacted in the TAM of IEX and PXIL was 245.41 MUs and 872.60 MUs respectively (Table-7 & Table-8). The volume of electricity transacted in the Green Term Ahead Market (G-TAM) of IEX was 162.26 MUs (Table-9).

3. Price of Short-term Transactions of Electricity

3.1. **Price of electricity transacted through Traders:** The minimum, maximum and weighted average sale prices have been computed for the electricity transacted through traders and the sale prices were ₹2.67/kWh, ₹4.55/kWh and ₹3.02/kWh respectively (Table-3). The weighted average sale prices were also computed for the electricity transacted during Round the Clock (RTC) and Off-peak periods separately, and the sale prices were ₹3.00/kWh and ₹3.03/kWh respectively. No electricity was transacted during the Peak period (Table-4).

3.2. **Price of electricity transacted through Power Exchanges:** The minimum, maximum and weighted average prices for the electricity transacted in the DAM of IEX were ₹1.00/kWh, ₹6.00/kWh and ₹2.86/kWh respectively. These prices in the DAM of PXIL were ₹1.23/kWh, ₹6.00/kWh and ₹2.99/kWh respectively (Table-5). The minimum, maximum and weighted average prices for the electricity transacted in the RTM of IEX were ₹0.05/kWh, ₹6.80/kWh and ₹2.85/kWh respectively (Table-6). The price of electricity transacted in the TAM of IEX and PXIL was ₹2.62/kWh and ₹2.62/kWh respectively (Table-7 and Table-8). The price of electricity transacted in the G-TAM of IEX was ₹3.52/kWh (Table-9).

3.3. **Price of electricity transacted through DSM:** The minimum, maximum and average price of DSM was ₹0.00/kWh and ₹8.00/kWh ₹2.81/kWh respectively (Table-10).

3.4. The prices of electricity transacted through trading licensees, power exchanges and DSM and their comparison is shown in Table-22 & 23, Figure-6 & 7.

4. Trading Margin

4.1. As per the CERC (Procedure, Terms and Conditions for grant of trading licence and other related matters) Regulations 2020, the trading licensees are allowed to charge trading margin of not less than 0 paise/kWh and up to 7 paise/kWh. The weighted average trading margin charged by the trading licensees for bilateral transactions during the month was ₹0.023/kWh.

5. Volume of Short-term Transactions of Electricity (Regional Entity¹-Wise)

5.1. Of the total bilateral transactions, top 5 regional entities sold 54.52% of the volume, and these were Punjab, Gujarat, Raipur Energen Limited, Sembcorp Gayatri Power Ltd. and Uttar Pradesh. Top 5 regional entities purchased 73.17% of the volume, and these were Madhya Pradesh, Tamil Nadu, Punjab, Himachal Pradesh and Rajasthan (Table-11 & 12).

5.2. Of the total DAM transactions of power exchanges, top 5 regional entities sold 34.17% of the volume, and these were Jaypee Nigrie Super Thermal Power Project, Odisha, Chhattisgarh, Uttar Pradesh and Teesta Stage 3 Hydro Power Project. Top 5 regional entities purchased 56.92% of the volume, and these were Andhra Pradesh, Punjab, Tamil Nadu, Rajasthan and Maharashtra (Table-13 & 14).

5.3. Of the total RTM transactions of power exchanges, top 5 regional entities sold 40.45% of the volume, and these were Neyveli Lignite Corporation Limited, Telangana, Odisha, Sembcorp Gayatri Power Ltd. and West Bengal. Top 5 regional entities purchased 73.86% of the volume, and these were Jammu & Kashmir, Andhra Pradesh, Rajasthan, Maharashtra and Uttar Pradesh (Table-15 & 16).

5.4. Of the total DSM transactions, top 5 regional entities under drew 23.01% of the volume, and these were NTPC Stations (Western Region), Uttar Pradesh, Madhya Pradesh, Maharashtra and Karnataka (Table-17). Top 5 regional entities overdrew 23.23% of the volume, and these were Tala Hydroelectric Project-Bhutan, Rajasthan, NTPC Stations (Eastern Region), Gujarat and West Bengal (Table-18).

5.5. The total volume of net short-term transactions of electricity (Regional entity-wise) i.e. volume of net transactions through bilateral, power exchanges and DSM is shown in Table-19 & 24. Top 5 electricity selling regional entities were Raipur Energen Limited, Sembcorp Gayatri Power Ltd., Chhattisgarh, Gujarat and Jaypee Nigrie Super Thermal Power Project. Top 5 electricity purchasing regional entities were Tamil Nadu, Andhra Pradesh, Madhya Pradesh, Rajasthan and Jammu & Kashmir.

¹ In case of a state, the entities which are “selling” also include generators connected to state grid and the entities which are “buying” also include open access consumers.

6. Congestion² on Inter-State Transmission Corridor for Day-Ahead Market and Real Time Market on Power Exchanges

6.1. The power exchanges use a price discovery mechanism in which the aggregate demand and supply are matched to arrive at an unconstrained market price and volume. This step assumes that there is no congestion in the inter-State transmission system between different regions. However, in reality, the system operator (NLDC) in coordination with RLDCs limits the flow (due to congestion) in the inter-State transmission system. In such a situation, power exchanges adopt a mechanism called “Market Splitting”³.

6.2. In the month of November 2020, congestion occurred in the RTM of IEX. There was no congestion on PXIL. The details of congestion are shown in Table-20. The volume of electricity that could not be cleared due to congestion & other reasons and could not be transacted through power exchanges is the difference between unconstrained cleared volume and actual cleared volume.

6.3. During the month, in terms of time, congestion occurred was 0.14% in the RTM on IEX (Table-19).

7. Volume and Price of Renewable Energy Certificates (RECs)

7.1. The concept of Renewable Energy Certificates (RECs) seeks to address mismatch between availability of renewable energy and the requirement of the obligated entities to meet their renewable purchase obligation by purchasing green attributes of renewable energy remotely located in the form of RECs. The REC mechanism is a market based instrument, to promote renewable sources of energy and development of electricity market.

² “Congestion” means a situation where the demand for transmission capacity exceeds the available transfer capability

³ “Market Splitting” is a mechanism adopted by Power Exchange where the market is split in the event of transmission congestion, into predetermined (by NLDC) bid areas or zones, which are cleared individually at their respective area prices such that the energy balance in every bid area is reached based upon the demand and supply in individual bid areas and using the available transmission corridor capacity between various bid areas simultaneously”
As a result of this market splitting the price of electricity in the importing region, where demand for electricity is more than supply, becomes relatively higher than the price of electricity in the exporting region.

7.2. One REC is equivalent to 1 MWh electricity injected into the grid from renewable energy sources. The REC is exchanged only in the power exchanges approved by CERC within the band of a floor price and forbearance (ceiling) price as notified by CERC from time to time. The first REC trading was held on power exchanges in May, 2011.

7.3. There were no transactions of REC in the month of November, 2020 as the scheduled trading was postponed by Hon'ble APTEL in matter of the CERC order fixing new floor and forbearance price for both Solar and Non-solar RECs.

8. Inferences:

- (1) The percentage of short-term transactions of electricity to total electricity generation was 12.40%.
- (2) Of the total short-term transactions, the electricity transacted in DAM and RTM of power exchanges constitutes 49.12%, followed by 35.31% through bilateral (21.59% through traders and term-ahead contracts on power exchanges and 13.72% directly between distribution companies) and 15.57% through DSM.
- (3) Of the total volume transacted through the power exchanges, 69.31% of the volume was transacted in DAM, followed by 18.08% in TAM and 12.62% in RTM.
- (4) Top 5 trading licensees had a share of 83.86% in the total volume traded by all the trading licensees.
- (5) The Herfindahl Hirschman Index computed for the volume of electricity traded by trading licensees was 0.2419, indicating moderate concentration of market power.
- (6) The weighted average price of electricity transacted through trading licensees was ₹3.02/kWh.
- (7) The weighted average price of electricity transacted in DAM of IEX and PXIL was ₹2.86/kWh and ₹2.99/kWh. The weighted average price of electricity transacted in RTM of IEX was ₹2.85/kWh. No electricity was transacted in the RTM of PXIL.

- (8) The average price of electricity transacted through DSM was ₹2.81/kWh.
- (9) The weighted average trading margin charged by the trading licensees for bilateral transactions was ₹0.023/kWh. The trading margin charged during the month was in line with the Trading Margin Regulations 2020.
- (10) Top 5 electricity selling regional entities were Raipur Energen Limited, Sembcorp Gayatri Power Ltd., Chhattisgarh, Gujarat and Jaypee Nigrie Super Thermal Power Project. Top 5 electricity purchasing regional entities were Tamil Nadu, Andhra Pradesh, Madhya Pradesh, Rajasthan and Jammu & Kashmir.
- (11) In the month of November 2020, congestion occurred in the RTM of IEX. In terms of time, congestion occurred was 0.14% in the RTM on IEX
- (12) There were no transactions of REC on both the power exchanges in the month of November 2020, as the scheduled REC trading sessions were postponed by the order of Hon'ble APTEL.

Table-1: VOLUME OF SHORT-TERM TRANSACTIONS OF ELECTRICITY IN INDIA, NOVEMBER 2020				
Sr.No	Short-term transactions	Volume (MUs)	% to Volume of short-term transactions	% to Total Generation
1	Bilateral	4171.15	35.31	4.38
	(i) Through Traders and PXs	2550.08	21.59	2.68
	(ii) Direct	1621.07	13.72	1.70
2	Through Power Exchanges	5802.71	49.12	6.09
	(i) IEX			
	(a) DAM	4860.46	41.14	5.10
	(b) RTM	893.62	7.56	0.94
	(ii) PXIL			
	(a) DAM	48.62	0.41	0.05
	(b) RTM	0.00	0.00	0.00
3	Through DSM	1839.64	15.57	1.93
	Total	11813.50	-	12.40
	Total Generation	95302.83	-	-

Source: NLDC

Figure-1: Volume of Various Kinds of Electricity Transactions in Total Electricity Generation, November 2020

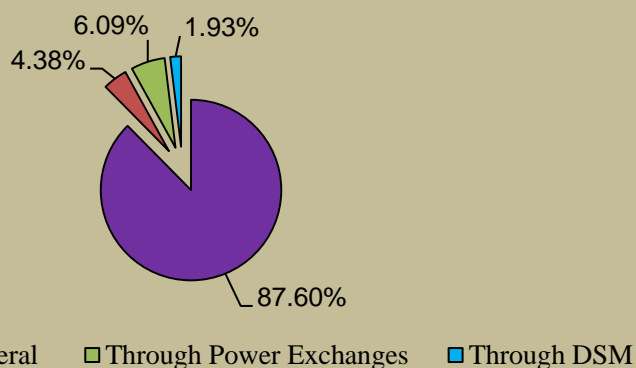


Figure-2: Volume of Short-term Transactions of Electricity, November 2020

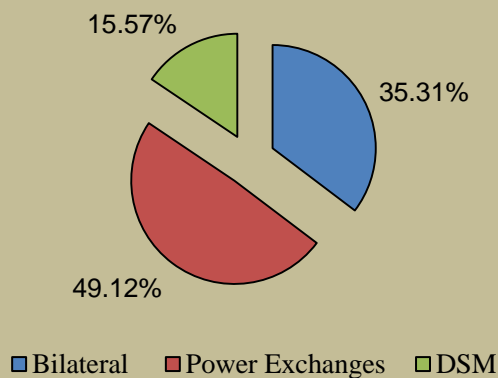


Figure-3: Volume transacted in different markets segments on Power Exchanges, November 2020

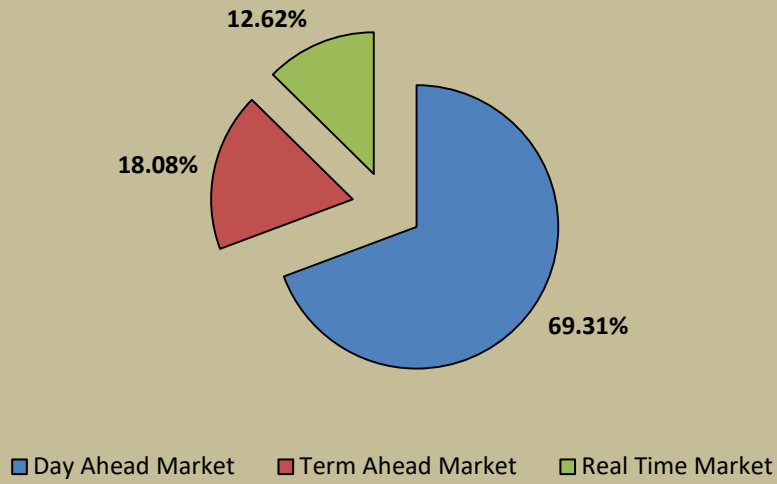


Figure-4: Volume of Short-term Transactions of Electricity, November 2020 (Day-wise)

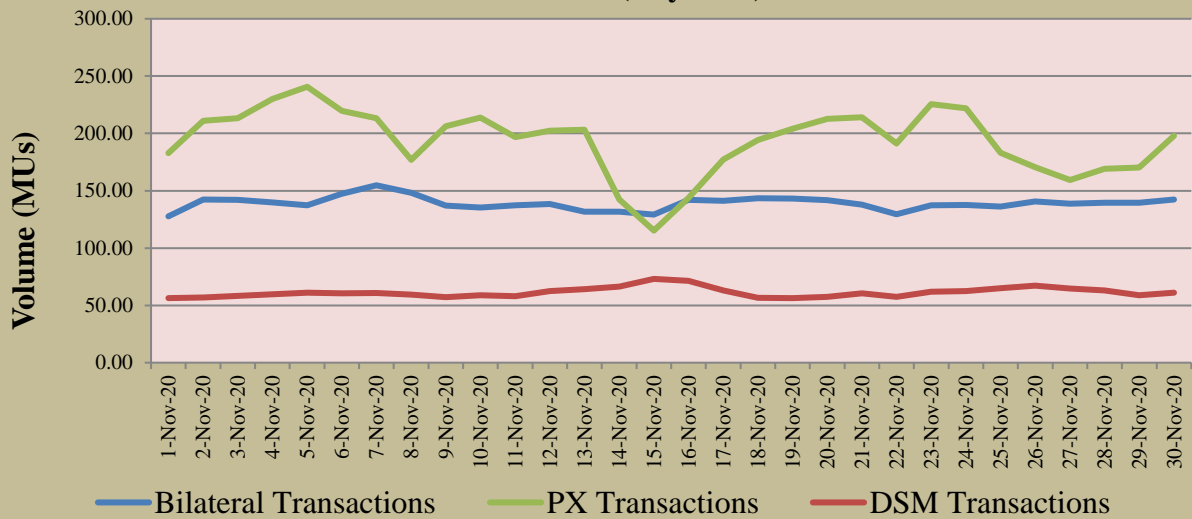


Table-2: PERCENTAGE SHARE OF ELECTRICITY TRANSACTED BY TRADING LICENSEES, NOVEMBER 2020			
Sr.No	Name of the Trading Licensee	% Share in total Volume transacted by Trading Licensees	Herfindahl-Hirschman Index
1	PTC India Ltd.	43.36	0.1880
2	Adani Enterprises Ltd.	18.16	0.0330
3	Manikaran Power Ltd.	9.25	0.0086
4	NTPC Vidyut Vyapar Nigam Ltd.	6.87	0.0047
5	GMR Energy Trading Ltd.	6.22	0.0039
6	Tata Power Trading Company (P) Ltd.	3.57	0.0013
7	Kreate Energy (I) Pvt. Ltd.	3.32	0.0011
8	Arunachal Pradesh Power Corporation (P) ltd	3.15	0.0010
9	National Energy Trading & Services Ltd.	1.09	0.0001
10	Essar Electric Power Development Corp. Ltd.	1.00	0.0001
11	Knowledge Infrastructure Systems (P) Ltd	0.78	0.0001
12	RPG Power Trading Company Ltd.	0.63	0.0000
13	Instinct Infra & Power Ltd.	0.62	0.0000
14	JSW Power Trading Company Ltd	0.46	0.0000
15	Statkraft Markets Pvt. Ltd.	0.40	0.0000
16	Gita Power & Infrastructure Private Limited	0.23	0.0000
17	Jaiprakash Associates Ltd.	0.22	0.0000
18	NLC India Ltd.	0.20	0.0000
19	Abja Power Private Limited	0.16	0.0000
20	Shree Cement Ltd.	0.08	0.0000
21	IPCL Power Trading Pvt. Ltd.	0.08	0.0000
22	Customized Energy Solutions India (P) Ltd.	0.07	0.0000
23	Refex Energy Limited	0.04	0.0000
24	Phillip Commodities India (P) Ltd.	0.03	0.0000
TOTAL		100.00%	0.2419
Top 5 trading licensees		83.86%	
<i>Note 1: Volume of electricity transacted by the trading licensees includes bilateral transactions (inter-state & intra-state) and the transactions undertaken through power exchanges.</i>			
<i>Note 2: Volume of electricity transacted by Global Energy Ltd is not included.</i>			
<i>Source: Information submitted by trading licensees</i>			

Figure 5: Percentage Share of Electricity Transacted by Trading Licensees, November 2020

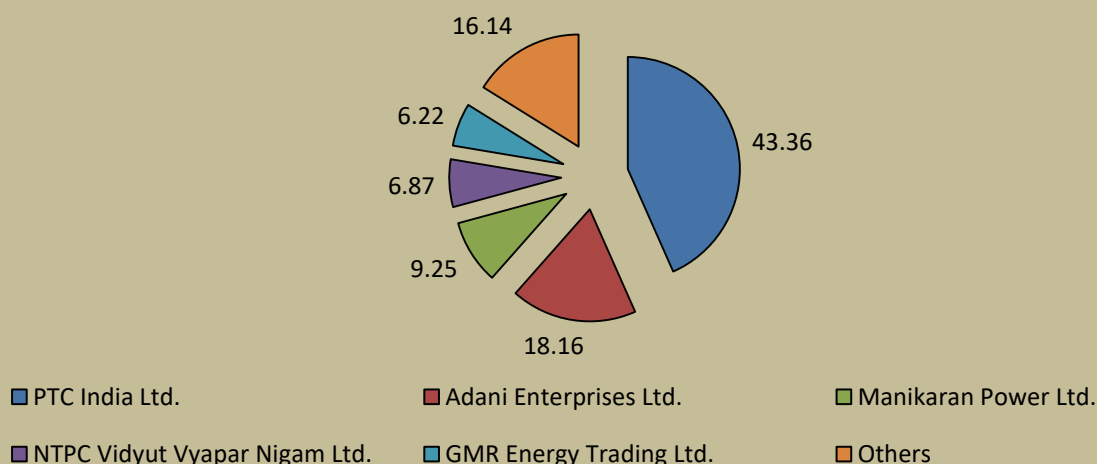


Table-3: PRICE OF ELECTRICITY TRANSACTED THROUGH TRADERS, NOVEMBER 2020

Sr.No	Item	Sale Price of Traders (₹/kWh)
1	Minimum	2.67
2	Maximum	4.55
3	Weighted Average	3.02

Source: Information submitted by trading licensees

Table-4: PRICE OF ELECTRICITY TRANSACTED THROUGH TRADERS (TIME-WISE), NOVEMBER 2020

Sr.No	Period of Trade	Sale Price of Traders (₹/kWh)
1	RTC	3.00
2	PEAK	-
3	OFF PEAK	3.03

Source: Information submitted by trading licensees

Table-5: PRICE OF ELECTRICITY TRANSACTED IN DAY AHEAD MARKET THROUGH POWER EXCHANGES, NOVEMBER 2020

Sr.No	ACP	Price in IEX (₹/kWh)	Price in PXIL (₹/kWh)
1	Minimum	1.00	1.23
2	Maximum	6.00	6.00
3	Weighted Average	2.86	2.99

Source: Information submitted by IEX and PXIL

Table-6: PRICE OF ELECTRICITY TRANSACTED IN REAL TIME MARKET THROUGH POWER EXCHANGES, NOVEMBER 2020

Sr.No	ACP	Price in IEX (₹/kWh)	Price in PXIL (₹/kWh)
1	Minimum	0.05	-
2	Maximum	6.80	-
3	Weighted Average	2.85	-

Source: Information submitted by IEX and PXIL

Table-7: VOLUME AND PRICE OF ELECTRICITY IN TERM AHEAD MARKET OF IEX, NOVEMBER 2020			
Sr.No	Term ahead contracts	Actual Scheduled Volume (MUs)	Weighted Average Price (₹/kWh)
1	Intra-Day Contracts	6.46	3.31
2	Day Ahead Contingency Contracts	13.67	2.88
3	Daily Contracts	170.08	2.59
4	Weekly Contracts	55.20	2.58
	Total	245.41	2.62

Source: IEX

Table-8: VOLUME AND PRICE OF ELECTRICITY IN TERM AHEAD MARKET OF PXIL, NOVEMBER 2020			
Sr.No	Term ahead contracts	Actual Scheduled Volume (MUs)	Weighted Average Price (₹/kWh)
1	Intra-Day Contracts	20.35	3.50
2	Any Day(s) Contracts	852.25	2.60
	Total	872.60	2.62

Source: PXIL

Table-9: VOLUME AND PRICE OF ELECTRICITY IN GREEN TERM AHEAD MARKET OF IEX, NOVEMBER 2020			
Sr.No	Green Term ahead contracts	Actual Scheduled Volume (MUs)	Weighted Average Price (₹/kWh)
1	Intra-Day Contracts	3.130	3.74
2	Day Ahead Contingency Contracts	159.13	3.51
	Total	162.26	3.52

Source: IEX

Table-10: PRICE OF ELECTRICITY TRANSACTED THROUGH DSM, NOVEMBER 2020		
Sr.No	Item	Price in All India Grid (₹/kWh)
1	Minimum	0.00
2	Maximum	8.00
3	Average	2.81

Source: NLDC

Figure-6: Price of Short-term Transactions of Electricity, November 2020

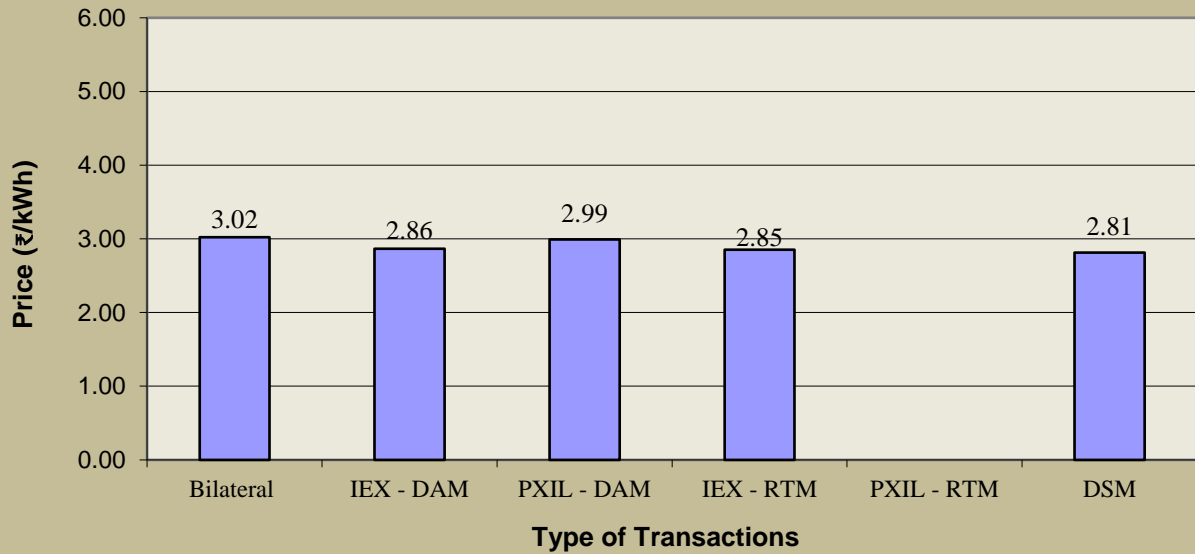
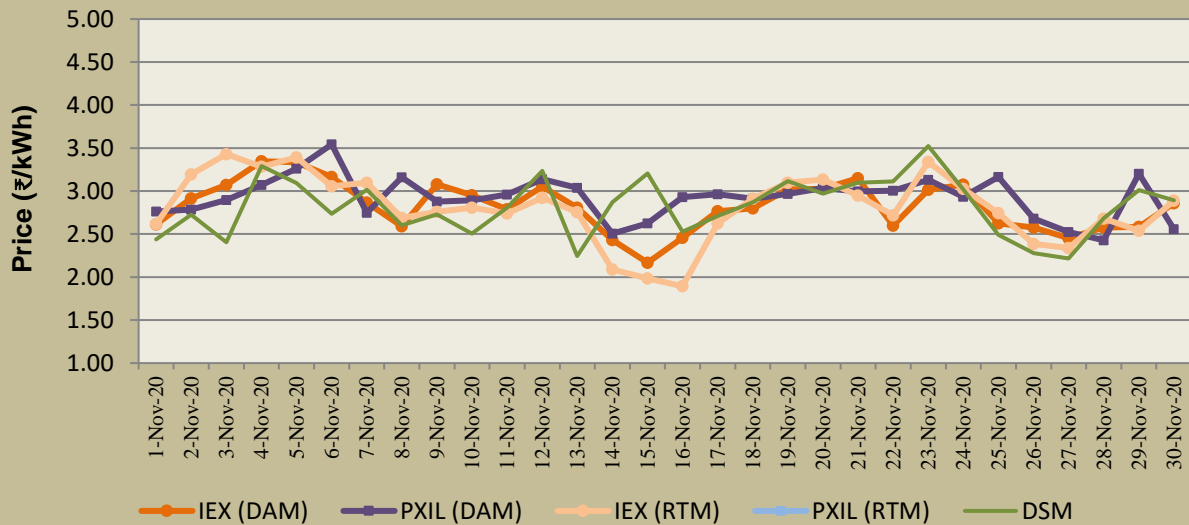


Figure-7: Price of Short-term Transactions of Electricity, November 2020 (Day-wise)



Note: In PXIL, no electricity was transacted in RTM.

Table-11: VOLUME OF ELECTRICITY SOLD THROUGH BILATERAL, NOVEMBER 2020		
Name of the Entity	Volume of Sale (MUs)	% of Volume
PUNJAB	699.50	16.80
GUJARAT	580.48	13.94
RPREL	413.56	9.93
SEBPCORP	339.05	8.14
UTTAR PRADESH	236.85	5.69
REGL	199.19	4.79
CHHATTISGARH	198.49	4.77
DVC	195.39	4.69
TELANGANA	155.17	3.73
SKS POWER	130.48	3.13
ESSAR POWER	120.69	2.90
DELHI	120.02	2.88
ADHUNIK POWER LTD	91.49	2.20
DB POWER	70.93	1.70
JINDAL STAGE-II	62.16	1.49
JINDAL POWER	58.04	1.39
HARYANA	55.20	1.33
JITPL	54.13	1.30
ONGC PALATANA	53.07	1.27
TASHIDENG HEP	45.43	1.09
BALCO	44.54	1.07
J & K	42.65	1.02
KARNATAKA	28.11	0.68
JAYPEE NIGRIE	27.98	0.67
JORETHANG	22.86	0.55
ODISHA	19.74	0.47
CHUZACHEN HEP	15.36	0.37
RAJASTHAN	9.11	0.22
LANKO_AMK	8.28	0.20
HIMACHAL PRADESH	8.20	0.20
NAGALAND	7.97	0.19
MAHARASHTRA	7.89	0.19
ANDHRA PRADESH	6.45	0.16
SIKKIM	6.13	0.15
TRN ENERGY	6.00	0.14
MANIPUR	4.52	0.11
WEST BENGAL	4.12	0.10
MEGHALAYA	3.52	0.08
MP	2.97	0.07
BIHAR	2.39	0.06
MB POWER	1.92	0.05
THERMAL POWERTECH	0.92	0.02
ACBIL	0.72	0.02
EMCO	0.69	0.02
UTTARAKHAND	0.38	0.01
Total	4162.75	100.00
Volume Sold by top 5 Regional Entities	2269.44	54.52

Table-12: VOLUME OF ELECTRICITY PURCHASED THROUGH BILATERAL, NOVEMBER 2020		
Name of the Entity	Volume of Purchase (MUs)	% of Volume
MP	1099.12	26.35
TAMIL NADU	779.20	18.68
PUNJAB	688.59	16.51
HIMACHAL PRADESH	291.46	6.99
RAJASTHAN	193.75	4.65
WEST BENGAL	177.31	4.25
HARYANA	117.87	2.83
CHHATTISGARH	99.82	2.39
JHARKHAND	91.49	2.19
BIHAR	90.59	2.17
UTTAR PRADESH	74.55	1.79
UTTARAKHAND	72.22	1.73
DELHI	61.08	1.46
ASSAM	58.83	1.41
BANGLADESH	58.31	1.40
ODISHA	52.69	1.26
MAHARASHTRA	44.82	1.07
DVC	29.42	0.71
TELANGANA	22.62	0.54
NEPAL(NVVN)	17.99	0.43
ANDHRA PRADESH	15.17	0.36
GOA	10.98	0.26
MEGHALAYA	7.20	0.17
AMPS Hazira	5.76	0.14
DADRA & NAGAR HAVELI	4.03	0.10
DAMAN AND DIU	2.39	0.06
GUJARAT	2.31	0.06
KARNATAKA	1.57	0.04
TOTAL	4171.15	100.00
Volume Purchased by top 5 Regional Entities	3052.11	73.17

Table-13: VOLUME OF ELECTRICITY SOLD IN DAY AHEAD MARKET THROUGH POWER EXCHANGES, NOVEMBER 2020		
Name of the Entity	Volume of Sale (MUs)	% of Volume
JAYPEE NIGRIE	393.64	8.02
ODISHA	384.62	7.83
CHHATTISGARH	378.61	7.71
UTTAR PRADESH	268.63	5.47
TEESTA STG3	251.81	5.13
DB POWER	251.40	5.12
RPREL	238.17	4.85
SEMBCORP	226.70	4.62
MP	214.29	4.37
GUJARAT	174.57	3.56
COASTGEN	171.89	3.50
JINDAL POWER	164.27	3.35
WEST BENGAL	145.63	2.97
BIHAR	135.39	2.76
REGL	129.71	2.64
JINDAL STAGE-II	110.48	2.25
HIMACHAL PRADESH	100.80	2.05
DELHI	90.85	1.85
RKM POWER	88.28	1.80
EMCO	87.52	1.78
ESSAR POWER	77.71	1.58
KARNATAKA	73.52	1.50
MB POWER	69.73	1.42
ASSAM	64.41	1.31
RAJASTHAN	57.41	1.17
NEEPCO STATIONS	46.11	0.94
GMR KAMALANGA	45.09	0.92
THERMAL POWERTECH	44.35	0.90
MARUTI COAL	37.75	0.77
SPECTRUM	31.48	0.64
GOA	25.77	0.52
NTPC STATIONS-WR	23.73	0.48
TELANGANA	22.49	0.46
KARCHAM WANGTOO	18.07	0.37
AD HYDRO	17.03	0.35
ACBIL	15.85	0.32
DIKCHU HEP	15.34	0.31
JHABUA POWER_MP	14.90	0.30
BALCO	14.63	0.30
HARYANA	14.51	0.30
ANDHRA PRADESH	13.65	0.28
SIKKIM	12.72	0.26
MAHARASHTRA	11.26	0.23
SAINJ HEP	11.17	0.23
MEGHALAYA	10.51	0.21
CHANDIGARH	10.11	0.21
DVC	8.88	0.18
ARUNACHAL PRADESH	8.88	0.18

TRIPURA	8.75	0.18
KERALA	8.57	0.17
JHARKHAND	7.88	0.16
JITPL	7.45	0.15
SINGOLI BHATWARI HEP	6.52	0.13
NTPC STATIONS-ER	6.39	0.13
NLC	6.01	0.12
IL&FS	5.27	0.11
MIZORAM	4.34	0.09
SKS POWER	3.76	0.08
NTPL	3.33	0.07
JORETHANG	3.07	0.06
ADANI GREEN	2.80	0.06
NTPC STATIONS-SR	2.42	0.05
CHUZACHEN HEP	2.42	0.05
NTPC STATIONS-NER	1.67	0.03
NAGALAND	0.97	0.02
LANCO BUDHIL	0.88	0.02
DADRA & NAGAR HAVELI	0.77	0.02
TEESTA HEP	0.60	0.01
DHARIWAL POWER	0.59	0.01
TAMIL NADU	0.30	0.01
DGEN MEGA POWER	0.01	0.0002
Total	4909.08	100.00
Volume sold by top 5 Regional Entities	1677.31	34.17

Table-14: VOLUME OF ELECTRICITY PURCHASED IN DAY AHEAD MARKET THROUGH POWER EXCHANGES, NOVEMBER 2020		
Name of the Entity	Volume of Purchase (MUs)	% of Volume
ANDHRA PRADESH	903.25	18.40
PUNJAB	536.16	10.92
TAMIL NADU	526.75	10.73
RAJASTHAN	434.13	8.84
MAHARASHTRA	394.11	8.03
UTTARAKHAND	359.54	7.32
GUJARAT	350.67	7.14
J & K	189.68	3.86
DELHI	185.63	3.78
HARYANA	175.82	3.58
UTTAR PRADESH	150.60	3.07
TELANGANA	149.18	3.04
HIMACHAL PRADESH	104.56	2.13
ASSAM	65.63	1.34
KARNATAKA	65.36	1.33
KERALA	48.09	0.98
AMPS Hazira	44.39	0.90
WEST BENGAL	33.98	0.69
MP	33.24	0.68
DADRA & NAGAR HAVELI	31.68	0.65
ODISHA	29.25	0.60
BIHAR	27.44	0.56
JHARKHAND	25.35	0.52
DAMAN AND DIU	12.90	0.26
GOA	10.80	0.22
MEGHALAYA	5.63	0.11
CHANDIGARH	5.36	0.11
DVC	3.74	0.08
KAPP 3&4	3.48	0.07
MANIPUR	1.86	0.04
ARUNACHAL PRADESH	0.61	0.01
CHHATTISGARH	0.18	0.004
TRIPURA	0.02	0.0005
TOTAL	4909.08	100.00
Volume purchased by top 5 Regional Entities	2794.39	56.92

Table-15: VOLUME OF ELECTRICITY SOLD IN REAL TIME MARKET THROUGH POWER EXCHANGES, NOVEMBER 2020		
Name of the Entity	Volume of Sale (MUs)	% of Volume
NLC	123.53	13.82
TELANGANA	81.76	9.15
ODISHA	64.76	7.25
SEMBCORP	50.30	5.63
WEST BENGAL	41.14	4.60
NTPC STATIONS-WR	33.19	3.71
GUJARAT	33.00	3.69
RKM POWER	30.99	3.47
UTTAR PRADESH	29.45	3.30
EMCO	29.06	3.25
NEEPCO STATIONS	26.41	2.96
DELHI	25.12	2.81
CHHATTISGARH	24.46	2.74
JHABUA POWER_MP	23.90	2.67
TRIPURA	21.99	2.46
RAJASTHAN	20.58	2.30
TRN ENERGY	20.58	2.30
MB POWER	19.18	2.15
NTPC STATIONS-ER	18.38	2.06
NTPC STATIONS-SR	17.69	1.98
RPREL	16.64	1.86
NTPL	12.22	1.37
MP	12.17	1.36
KARNATAKA	11.91	1.33
BRBCL,NABINAGAR	11.17	1.25
SASAN UMPP	10.22	1.14
SKS POWER	9.70	1.09
HIMACHAL PRADESH	8.23	0.92
MANIPUR	7.95	0.89
JINDAL STAGE-II	6.16	0.69
BIHAR	5.47	0.61
MAHARASHTRA	5.06	0.57
DVC	4.46	0.50
REGL	4.31	0.48
DB POWER	4.20	0.47
SIKKIM	3.83	0.43
JINDAL POWER	3.27	0.37
BALCO	2.33	0.26
THERMAL POWERTECH	2.17	0.24
TEESTA STG3	1.94	0.22
GMR KAMALANGA	1.92	0.21
NTPC STATIONS-NR	1.76	0.20
KERALA	1.44	0.16
ESSAR POWER	1.43	0.16
IL&FS	1.09	0.12
ONGC PALATANA	1.06	0.12
ASSAM	0.96	0.11
NTPC STATIONS-NER	0.93	0.10
HARYANA	0.92	0.10

J & K	0.90	0.10
NSPCL	0.49	0.05
TAMIL NADU	0.44	0.05
MARUTI COAL	0.40	0.05
MEGHALAYA	0.24	0.03
ACBIL	0.21	0.02
DHARIWAL POWER	0.14	0.02
ANDHRA PRADESH	0.11	0.01
CHANDIGARH	0.09	0.01
DIKCHU HEP	0.08	0.01
SINGOLI BHATWARI HEP	0.06	0.01
RGPPL_Others	0.06	0.01
KARCHAM WANGTOO	0.04	0.004
Total	893.62	100.00
Volume sold by top 5 Regional Entities	361.49	40.45

Table-16: VOLUME OF ELECTRICITY PURCHASED IN REAL TIME MARKET THROUGH POWER EXCHANGES, NOVEMBER 2020		
Name of the Entity	Volume of Purchase (MUs)	% of Volume
J & K	400.55	44.82
ANDHRA PRADESH	97.24	10.88
RAJASTHAN	90.81	10.16
MAHARASHTRA	36.16	4.05
UTTAR PRADESH	35.24	3.94
DELHI	31.42	3.52
WEST BENGAL	26.55	2.97
BIHAR	24.00	2.69
HIMACHAL PRADESH	22.25	2.49
ODISHA	21.86	2.45
TELANGANA	18.74	2.10
TAMIL NADU	16.19	1.81
PUNJAB	10.69	1.20
KARNATAKA	9.26	1.04
ASSAM	7.99	0.89
GUJARAT	6.50	0.73
HARYANA	5.50	0.62
KERALA	5.27	0.59
JINDAL POWER	5.26	0.59
DVC	4.43	0.50
MP	4.14	0.46
MANIPUR	3.52	0.39
MEGHALAYA	2.27	0.25
DADRA & NAGAR HAVELI	1.82	0.20
UTTARAKHAND	1.55	0.17
CHHATTISGARH	1.13	0.13
JHARKHAND	0.82	0.09
GOA	0.80	0.09
DAMAN AND DIU	0.59	0.07
MARUTI COAL	0.56	0.06
SKS POWER	0.39	0.04
SIKKIM	0.10	0.01
TRIPURA	0.02	0.002
TOTAL	893.62	100.00
Volume purchased by top 5 Regional Entities	660.01	73.86

Table-17: VOLUME OF ELECTRICITY UNDER DRAWAL (EXPORTED) THROUGH DSM, NOVEMBER 2020		
Name of the Entity	Volume of Under drawal (MUs)	% of Volume
NTPC STATIONS-WR	121.81	6.05
UTTAR PRADESH	96.87	4.81
MP	83.29	4.14
MAHARASHTRA	81.08	4.03
KARNATAKA	80.09	3.98
NHPC STATIONS	78.36	3.89
TELANGANA	78.07	3.88
CHUKHA HEP	74.91	3.72
TAMIL NADU	69.99	3.48
SASAN UMPP	68.35	3.40
RAJASTHAN	66.18	3.29
BIHAR	63.33	3.15
GUJARAT	60.26	2.99
DELHI	57.89	2.88
ODISHA	53.77	2.67
ANDHRA PRADESH	44.02	2.19
NLC	42.93	2.13
NTPC STATIONS-NR	42.88	2.13
HARYANA	33.42	1.66
DVC	33.08	1.64
PUNJAB	32.40	1.61
NTPC STATIONS-SR	31.70	1.57
NTPC STATIONS-ER	27.31	1.36
CHHATTISGARH	26.85	1.33
J & K	21.78	1.08
AMPS Hazira	20.30	1.01
UTTARAKHAND	18.16	0.90
GIWEL_BHUI	17.74	0.88
WEST BENGAL	17.68	0.88
JHARKHAND	17.66	0.88
JINDAL STAGE-II	15.78	0.78
KERALA	14.50	0.72
MB POWER	14.46	0.72
TRIPURA	14.11	0.70
HIMACHAL PRADESH	13.87	0.69
PONDICHERRY	13.04	0.65
BBMB	12.92	0.64
RPREL	10.13	0.50
NEEPCO STATIONS	9.08	0.45
OSTRO	8.49	0.42
RENEW_BHACHAU	8.13	0.40
ASSAM	7.42	0.37
GIWEL_TCN	7.31	0.36
EMCO	7.28	0.36
NJPC	7.04	0.35
MAITHON POWER LTD	6.96	0.35
ALFANAR_BHUI	6.94	0.34
TEESTA HEP	6.68	0.33
JINDAL POWER	6.38	0.32
TATA_PVGD	6.31	0.31
ORANGE_TCN	6.28	0.31
JAYPEE NIGRIE	6.04	0.30
GOA	5.63	0.28
KAPP 3&4	5.57	0.28
REGL	5.01	0.25
CLEAN_SLR	4.91	0.24
ACBIL	4.82	0.24
KURICHU HEP	4.82	0.24
RAMPUR HEP	4.65	0.23

TRN ENERGY	4.58	0.23
BETAM_TCN	4.49	0.22
GMR KAMALANGA	4.43	0.22
MEGHALAYA	4.40	0.22
LANKO_AMK	4.31	0.21
CGPL	4.04	0.20
SBG_NPK	3.96	0.20
DB POWER	3.90	0.19
JHABUA POWER_MP	3.83	0.19
FORTUM2_PVGD	3.81	0.19
ESSAR POWER	3.61	0.18
SIKKIM	3.51	0.17
BANGLADESH	3.50	0.17
MANGDECHU HEP	3.49	0.17
RAP C	3.44	0.17
CHANDIGARH	3.43	0.17
RENEW_BHUJ	3.41	0.17
MYTRAH_TCN	3.38	0.17
DADRA & NAGAR HAVELI	3.31	0.16
BRBCL,NABINAGAR	3.26	0.16
KARCHAM WANGTOO	3.18	0.16
TEHRI	3.16	0.16
PARAM_PVGD	3.09	0.15
RKM POWER	3.03	0.15
AGEMPL BHUJ	3.03	0.15
SBG_PVGD	3.02	0.15
INOX_BHUJ	2.93	0.15
ARUNACHAL PRADESH	2.88	0.14
ASEJTL_SLR	2.88	0.14
NTPC_ANTP	2.82	0.14
AVAADA1_PVGD	2.68	0.13
ARINSUM_RUMS	2.67	0.13
ACME_RUMS	2.53	0.13
MIZORAM	2.51	0.12
SEMBCORP	2.50	0.12
BARC	2.25	0.11
MAHINDRA_RUMS	2.15	0.11
DHARIWAL POWER	2.06	0.10
ACME_SLR	2.03	0.10
NPGC	2.01	0.10
RAIL	1.96	0.10
AVAADA2_PVGD	1.96	0.10
AZURE_PVGD	1.95	0.10
MANIPUR	1.85	0.09
TATA_SLR	1.84	0.09
NEPAL(NVVN)	1.82	0.09
NTPC STATIONS-NER	1.78	0.09
COASTGEN	1.76	0.09
NAGALAND	1.71	0.08
JITPL	1.68	0.08
NSPCL	1.64	0.08
RANGANADI HEP	1.63	0.08
KOTESHWAR	1.63	0.08
THERMAL POWERTECH	1.58	0.08
RENEW_SLR_BKN	1.57	0.08
TATA_ANTP	1.53	0.08
RANGIT HEP	1.47	0.07
KSK MAHANADI	1.42	0.07
FORTUM1_PVGD	1.42	0.07
ADHUNIK POWER LTD	1.40	0.07
SB_SLR	1.30	0.06
AD HYDRO	1.29	0.06
NETCL VALLUR	1.28	0.06

ARERJL_SLR	1.25	0.06
NTPL	1.25	0.06
SKS POWER	1.25	0.06
DAMAN AND DIU	1.24	0.06
TEESTA STG3	1.23	0.06
RAP B	1.18	0.06
ADY10_PVGD	1.14	0.06
DIKCHU HEP	1.14	0.06
ADY13_PVGD	1.12	0.06
MTPS II	1.08	0.05
ADY6_PVGD	1.07	0.05
AHSP_ANTP	1.05	0.05
SAINJ HEP	1.05	0.05
YARROW_PVGD	1.03	0.05
FRV_NPK	0.99	0.05
ADY2_PVGD	0.99	0.05
ONGC PALATANA	0.98	0.05
ABSP_ANTP	0.97	0.05
AKSP_ANTP	0.95	0.05
AZURE_ANTP	0.93	0.05
JORETHANG	0.89	0.04
AZURE34_SLR	0.87	0.04
AKS_PVGD	0.86	0.04
NAPP	0.85	0.04
IL&FS	0.84	0.04
BHADRAVATHI HVDC	0.83	0.04
RENEW_PVGD	0.83	0.04
ARS_PVGD	0.82	0.04
KREDL_PVGD	0.82	0.04
ADY1_PVGD	0.81	0.04
ADY3_PVGD	0.75	0.04
IGSTPS	0.72	0.04
CHUZACHEN HEP	0.72	0.04
AZURE_SLR	0.66	0.03
KSMPL_SLR	0.65	0.03
PARE HEP	0.59	0.03
BALCO	0.55	0.03
NEP	0.51	0.03
DOYANG HEP	0.49	0.02
LOKTAK	0.39	0.02
SHREE CEMENT	0.39	0.02
RENEW_SLR	0.38	0.02
FRV_ANTP	0.37	0.02
LANCO BUDHIL	0.35	0.02
AYANA_NPKUNTA	0.29	0.01
RGPPL	0.25	0.01
HVDC ALPD	0.20	0.01
SPRNG_NPKUNTA	0.18	0.01
VINDHYACHAL HVDC	0.18	0.01
SINGOLI BHATWARI HEP	0.13	0.01
TASHIDENG HEP	0.13	0.01
NFF	0.09	0.00
HVDC PUS	0.05	0.00
ADANI GREEN	0.03	0.001
HVDC CHAMPA	0.03	0.001
HVDC RAIGARH	0.03	0.001
DCPP	0.02	0.001
DGEN MEGA POWER	0.001	0.00003
Total	2013.13	100.00
Volume Exported by top 5 Regional Entities	463.14	23.01

Table-18: VOLUME OF ELECTRICITY OVER DRAWAL (IMPORTED) THROUGH DSM, NOVEMBER 2020		
Name of the Entity	Volume of Over drawal (MUs)	% of Volume
TALA HEP	115.34	6.92
RAJASTHAN	87.38	5.24
NTPC STATIONS-ER	69.97	4.20
GUJARAT	60.91	3.66
WEST BENGAL	53.47	3.21
UTTAR PRADESH	48.72	2.92
NTPC STATIONS-WR	48.70	2.92
NTPC STATIONS-NR	48.39	2.90
MAHARASHTRA	47.83	2.87
PUNJAB	45.77	2.75
J & K	45.24	2.72
HARYANA	44.50	2.67
TAMIL NADU	42.91	2.58
CGPL	37.22	2.23
MP	35.01	2.10
NTPC STATIONS-SR	32.05	1.92
UTTARAKHAND	31.17	1.87
KARNATAKA	30.11	1.81
HIMACHAL PRADESH	28.27	1.70
ANDHRA PRADESH	28.15	1.69
BIHAR	27.86	1.67
DVC	27.35	1.64
TELANGANA	23.37	1.40
KERALA	21.86	1.31
AMPS Hazira	20.73	1.24
BALCO	19.52	1.17
NLC	18.56	1.11
CHHATTISGARH	17.66	1.06
NHPC STATIONS	16.65	1.00
ASSAM	15.77	0.95
NETCL VALLUR	15.25	0.92
RPREL	15.09	0.91
RGPPL	14.69	0.88
JHARKHAND	12.68	0.76
THERMAL POWERTECH	12.17	0.73
ODISHA	11.69	0.70
DAGACHU	10.98	0.66
BANGLADESH	10.44	0.63
RAIL	10.14	0.61
NPGC	10.10	0.61
JHABUA POWER_MP	9.35	0.56
MB POWER	8.90	0.53
COASTGEN	8.67	0.52
DB POWER	8.24	0.49
GIWEL_TCN	8.19	0.49
MYTRAH_TCN	7.97	0.48
KAPP 3&4	7.73	0.46
REGL	7.42	0.45
DADRA & NAGAR HAVELI	7.36	0.44
DAMAN AND DIU	7.27	0.44
GOA	6.92	0.42
TEESTA STG3	6.83	0.41
SEMBCORP	6.82	0.41
INOX_BHUJ	6.78	0.41
NEPAL(NVVN)	6.12	0.37
ORANGE_TCN	5.99	0.36
EMCO	5.98	0.36
TATA_PVGD	5.92	0.36
NTPC_ANTP	5.77	0.35
MAITHON POWER LTD	5.74	0.34

IGSTPS	4.91	0.29
ARUNACHAL PRADESH	4.89	0.29
OSTRO	4.83	0.29
CHANDIGARH	4.82	0.29
MANGDECHU HEP	4.74	0.28
BETAM_TCN	4.73	0.28
BBMB	4.68	0.28
AGEMPL BHUJ	4.54	0.27
BRBCL,NABINAGAR	4.47	0.27
SBG_NPK	4.10	0.25
RENEW_BHACHAU	4.09	0.25
KURICHU HEP	3.98	0.24
GIWEL_BHUJ	3.96	0.24
ARINSUM_RUMS	3.84	0.23
JORETHANG	3.67	0.22
ACBIL	3.66	0.22
MAHINDRA_RUMS	3.59	0.22
AZURE_SLR	3.51	0.21
MANIPUR	3.39	0.20
FORTUM2_PVGD	3.09	0.19
KARCHAM WANGTOO	3.04	0.18
JINDAL STAGE-II	3.04	0.18
RENEW_SLR_BKN	3.00	0.18
ALFANAR_BHUJ	2.99	0.18
ARERJL_SLR	2.94	0.18
NSPCL	2.91	0.17
ACME_RUMS	2.90	0.17
SBG_PVGD	2.82	0.17
MTPS II	2.75	0.17
NAPP	2.74	0.16
MEGHALAYA	2.73	0.16
SIKKIM	2.65	0.16
NTPC STATIONS-NER	2.61	0.16
RENEW_BHUJ	2.57	0.15
ADHUNIK POWER LTD	2.52	0.15
CLEAN_SLR	2.31	0.14
DELHI	2.24	0.13
KSK MAHANADI	2.18	0.13
AVAADA2_PVGD	2.14	0.13
PARAM_PVGD	2.12	0.13
PONDICHERRY	2.12	0.13
TASHIDENG HEP	2.09	0.13
MIZORAM	2.08	0.12
TATA_ANTP	2.07	0.12
NJPC	2.05	0.12
IL&FS	2.02	0.12
TEHRI	1.80	0.11
AVAADA1_PVGD	1.80	0.11
RKM POWER	1.79	0.11
FRV_ANTP	1.77	0.11
AZURE34_SLR	1.71	0.10
JINDAL POWER	1.68	0.10
NTPL	1.65	0.10
FORTUM1_PVGD	1.64	0.10
SB_SLR	1.62	0.10
ACME_SLR	1.60	0.10
NAGALAND	1.57	0.09
NEP	1.57	0.09
NEEPCO STATIONS	1.56	0.09
ESSAR POWER	1.41	0.08
AZURE_PVGD	1.30	0.08
AHSP_ANTP	1.23	0.07
AD HYDRO	1.22	0.07
ABSP_ANTP	1.22	0.07

FRV_NPK	1.19	0.07
AKSP_ANTP	1.15	0.07
ONGC PALATANA	1.13	0.07
JAYPEE NIGRIE	1.13	0.07
DGEN MEGA POWER	1.09	0.07
AKS_PVGD	1.02	0.06
RAP B	1.00	0.06
ADY3_PVGD	0.97	0.06
RANGANADI HEP	0.95	0.06
AYANA_NPKUNTA	0.95	0.06
TATA_SLR	0.95	0.06
RENEW_PVGD	0.94	0.06
AZURE_ANTP	0.93	0.06
ADY6_PVGD	0.86	0.05
JITPL	0.81	0.05
YARROW_PVGD	0.80	0.05
DIKCHU HEP	0.78	0.05
ADY1_PVGD	0.75	0.04
SKS POWER	0.74	0.04
MEENAKSHI	0.71	0.04
RENEW_SLR	0.68	0.04
TRIPURA	0.67	0.04
KSMPL_SLR	0.65	0.04
ADY10_PVGD	0.65	0.04
GMR KAMALANGA	0.63	0.04
ASEJTL_SLR	0.63	0.04
ADY2_PVGD	0.61	0.04
ADY13_PVGD	0.61	0.04
ARS_PVGD	0.54	0.03
KOTESHWAR	0.52	0.03
RANGIT HEP	0.51	0.03
KREDL_PVGD	0.49	0.03
LANKO KONDAPALLI	0.45	0.03
HVDC CHAMPA	0.43	0.03
SIMHAPURI	0.43	0.03
SASAN UMPP	0.42	0.02
DHARIWAL POWER	0.34	0.02
RAMPUR HEP	0.32	0.02
CHUKHA HEP	0.31	0.02
PARE HEP	0.30	0.02
SAINJ HEP	0.30	0.02
CHUZACHEN HEP	0.29	0.02
LANCO BUDHIL	0.24	0.01
RAP C	0.22	0.01
SHREE CEMENT	0.20	0.01
HVDC PUS	0.15	0.01
SPRNG_NPKUNTA	0.14	0.01
DOYANG HEP	0.14	0.01
LOKTAK	0.13	0.01
HVDC RAIGARH	0.09	0.006
TRN ENERGY	0.09	0.005
TEESTA HEP	0.06	0.003
NFF	0.04	0.003
SINGOLI BHATWARI HEP	0.04	0.002
LANKO_AMK	0.03	0.002
HVDC ALPD	0.02	0.001
BARC	0.01	0.001
DCPP	0.01	0.0004
BHADRAVATHI HVDC	0.0002	0.00001
TOTAL	1666.14	100.00
Volume Imported by top 5 Regional Entities	387.07	23.23

Table-19: TOTAL VOLUME OF NET SHORT-TERM TRANSACTIONS OF ELECTRICITY (REGIONAL ENTITY-WISE), NOVEMBER 2020		
S. No.	Name of the Entity	Total volume of net short-term transactions of electricity*
1	TAMIL NADU	1294.32
2	ANDHRA PRADESH	979.57
3	MP	858.79
4	RAJASTHAN	652.79
5	J & K	570.14
6	PUNJAB	549.31
7	UTTARAKHAND	445.95
8	MAHARASHTRA	417.62
9	HIMACHAL PRADESH	315.42
10	HARYANA	239.65
11	TALA HEP	115.34
12	JHARKHAND	104.80
13	WEST BENGAL	82.74
14	ASSAM	75.42
15	BANGLADESH	65.25
16	KERALA	50.72
17	AMPS Hazira	50.58
18	DADRA & NAGAR HAVELI	40.82
19	CGPL	33.18
20	NEPAL(NVVN)	22.29
21	DAMAN AND DIU	21.90
22	NTPC STATIONS-ER	17.89
23	RGPPL	14.44
24	NETCL VALLUR	13.97
25	DAGACHU	10.98
26	RAIL	8.19
27	NPGC	8.09
28	KAPP 3&4	5.64
29	MYTRAH_TCN	4.60
30	IGSTPS	4.19
31	INOX_BHUJ	3.85
32	NTPC STATIONS-NR	3.75
33	NTPC_ANTP	2.95
34	AZURE_SLR	2.85
35	NAPP	1.89
36	ARERJL_SLR	1.69
37	MTPS II	1.67
38	AGEMPL BHUJ	1.51
39	MAHINDRA_RUMS	1.43
40	RENEW_SLR_BKN	1.43
41	FRV_ANTP	1.40
42	MANGDECHU HEP	1.25
43	ARINSUM_RUMS	1.18
44	DGEN MEGA POWER	1.08
45	NEP	1.06
46	GIWEL_TCN	0.88
47	AZURE34_SLR	0.84
48	NSPCL	0.78
49	KSK MAHANADI	0.76
50	MEENAKSHI	0.71
51	AYANA_NPKUNTA	0.66
52	TATA_ANTP	0.54
53	LANKO KONDAPALLI	0.45
54	SIMHAPURI	0.43
55	HVDC CHAMPA	0.40
56	ACME_RUMS	0.37
57	SB_SLR	0.32
58	RENEW_SLR	0.29
59	ABSP_ANTP	0.26
60	BETAM_TCN	0.25
61	FORTUM1_PVGD	0.22

62	ADY3_PVGD	0.22
63	FRV_NPK	0.20
64	AKSP_ANTP	0.20
65	AVAADA2_PVGD	0.18
66	AHSP_ANTP	0.18
67	AKS_PVGD	0.16
68	SBG_NPK	0.14
69	RENEW_PVGD	0.11
70	HVDC PUS	0.10
71	HVDC RAIGARH	0.07
72	KSMPL_SLR	0.01
73	AZURE_ANTP	-0.003
74	DCPP	-0.01
75	SPRNG_NPKUNTA	-0.04
76	NFF	-0.05
77	RGPPL_Others	-0.06
78	ADY1_PVGD	-0.06
79	VINDHYACHAL HVDC	-0.18
80	RAP B	-0.18
81	HVDC ALPD	-0.18
82	SHREE CEMENT	-0.20
83	SBG_PVGD	-0.20
84	ADY6_PVGD	-0.21
85	YARROW_PVGD	-0.23
86	LOKTAK	-0.27
87	ARS_PVGD	-0.28
88	PARE HEP	-0.29
89	ORANGE_TCN	-0.29
90	KREDL_PVGD	-0.33
91	DOYANG HEP	-0.35
92	ADY2_PVGD	-0.38
93	TATA_PVGD	-0.39
94	ACME_SLR	-0.43
95	ADY10_PVGD	-0.49
96	ADY13_PVGD	-0.51
97	AZURE_PVGD	-0.65
98	RANGANADI HEP	-0.67
99	FORTUM2_PVGD	-0.72
100	BHADRAVATHI HVDC	-0.83
101	MEGHALAYA	-0.84
102	KURICHU HEP	-0.84
103	RENEW_BHUI	-0.84
104	AVAADA1_PVGD	-0.87
105	TATA_SLR	-0.89
106	RANGIT HEP	-0.96
107	PARAM_PVGD	-0.97
108	LANCO BUDHIL	-0.98
109	KOTESHWAR	-1.11
110	MAITHON POWER LTD	-1.22
111	TEHRI	-1.35
112	NTPC STATIONS-NER	-1.78
113	GOA	-1.89
114	BARC	-2.23
115	ASEJTL_SLR	-2.25
116	DHARIWAL POWER	-2.45
117	CLEAN_SLR	-2.60
118	ADANI GREEN	-2.83
119	RAP C	-3.22
120	CHANDIGARH	-3.45
121	OSTRO	-3.67
122	ALFANAR_BHUI	-3.95
123	RENEW_BHACHAU	-4.04
124	RAMPUR HEP	-4.33
125	MIZORAM	-4.77
126	NJPC	-4.99

127	IL&FS	-5.18
128	MANIPUR	-5.55
129	ARUNACHAL PRADESH	-6.25
130	SINGOLI BHATWARI HEP	-6.68
131	TEESTA HEP	-7.22
132	BBMB	-8.24
133	NAGALAND	-9.07
134	BRBCL,NABINAGAR	-9.96
135	PONDICHERRY	-10.92
136	SAINJ HEP	-11.91
137	LANKO_AMK	-12.57
138	DELHI	-13.51
139	GIWEL_BHUI	-13.78
140	NTPL	-15.16
141	DIKCHU HEP	-15.78
142	AD HYDRO	-17.09
143	ACBIL	-17.94
144	CHUZACHEN HEP	-18.21
145	KARCHAM WANGTOO	-18.25
146	NTPC STATIONS-SR	-19.76
147	JORETHANG	-23.15
148	SIKKIM	-23.43
149	TRN ENERGY	-31.07
150	SPECTRUM	-31.48
151	JHABUA POWER_MP	-33.28
152	BIHAR	-36.68
153	THERMAL POWERTECH	-36.86
154	MARUTI COAL	-37.60
155	BALCO	-42.53
156	TASHIDENG HEP	-43.46
157	TRIPURA	-44.14
158	GMR KAMALANGA	-50.81
159	ONGC PALATANA	-53.98
160	NHPC STATIONS	-61.71
161	JITPL	-62.44
162	CHUKHA HEP	-74.61
163	SASAN UMPP	-78.15
164	NEEPCO STATIONS	-80.05
165	KARNATAKA	-87.34
166	ADHUNIK POWER LTD	-90.37
167	MB POWER	-96.38
168	EMCO	-118.57
169	RKM POWER	-120.51
170	TELANGANA	-123.57
171	NTPC STATIONS-WR	-130.03
172	SKS POWER	-144.06
173	NLC	-153.91
174	COASTGEN	-164.98
175	DVC	-176.86
176	JINDAL STAGE-II	-191.55
177	ESSAR POWER	-202.03
178	JINDAL POWER	-225.01
179	TEESTA STG3	-248.15
180	DB POWER	-322.19
181	UTTAR PRADESH	-322.69
182	REGL	-330.79
183	ODISHA	-407.39
184	JAYPEE NIGRIE	-426.55
185	GUJARAT	-427.91
186	CHHATTISGARH	-509.62
187	SEMBCORP	-611.73
188	RPREL	-663.41

* Total volume of net short-term transactions of electricity includes net of transactions of electricity through bilateral, power exchange and UI

(-) indicates sale and (+) indicates purchase

Table-20: DETAILS OF CONGESTION IN POWER EXCHANGES, NOVEMBER 2020					
	Details of Congestion	Day Ahead Market		Real Time Market	
		IEX	PXIL	IEX	PXIL
A	Unconstrained Cleared Volume (MUs)	4860.46	48.62	893.61	0.00
B	Actual Cleared Volume and hence scheduled (MUs)	4860.46	48.62	893.62*	0.00
C	Volume of electricity that could not be cleared and hence not scheduled because of congestion (MUs)	0.00	0.00	0.00	0.00
D	Volume of electricity that could not be cleared and hence not scheduled because of reasons other than congestion (MUs)	0.00	0.00	0.00	0.00
E	Volume of electricity that could not be cleared as % to Unconstrained Cleared Volume	0.00%	0.00%	0.00%	0.00%
F	Percentage of the time congestion occurred during the month (Number of hours congestion occurred/Total number of hours in the month)	0.00%	0.00%	0.14%	0.00%
G	Congestion occurrence (%) time block wise				
	0.00 - 6.00 hours	0.00%	0.00%	0.00%	0.00%
	6.00 - 12.00 hours	0.00%	0.00%	0.00%	0.00%
	12.00 - 18.00 hours	0.00%	0.00%	0.00%	0.00%
	18.00 - 24.00 hours	0.00%	0.00%	100.00%	0.00%
* Market splitting due to congestion in the ER Region brought a price dip in the NER Region. This led to selection of a buyer from NER region, whose quoted price was higher than the ACP of NER Region but was lower than the MCP. Thus, the Actual Cleared Volume was more than Unconstrained Cleared Volume in a time block of 5 th November 2020.					
Source: IEX, PXIL & NLDC					

Table-21: VOLUME OF SHORT-TERM TRANSACTIONS OF ELECTRICITY IN INDIA (DAY-WISE) (MUs), NOVEMBER 2020								
Date	Bilateral		Day Ahead Market [#]		Real Time Market [#]		Deviation Settlement (Over Drawl + Under Generation)	Total Electricity Generation (MU) as given at CEA Website*
	Through Traders and PXs**	Direct	IEX	PXIL	IEX	PXIL		
1-Nov-20	74.19	53.48	157.79	1.75	23.35	0.00	56.33	3304.21
2-Nov-20	88.04	54.35	179.39	2.14	29.55	0.00	56.81	3400.93
3-Nov-20	89.41	52.62	179.68	2.45	31.27	0.00	58.19	3409.32
4-Nov-20	84.16	55.55	193.36	2.75	34.00	0.00	59.56	3391.05
5-Nov-20	81.37	55.89	204.76	3.12	32.82	0.00	61.10	3350.69
6-Nov-20	90.84	56.41	181.74	3.62	34.42	0.00	60.59	3373.02
7-Nov-20	98.68	56.07	172.89	2.51	38.00	0.00	60.83	3336.18
8-Nov-20	93.76	54.57	150.23	2.06	24.79	0.00	59.34	3210.43
9-Nov-20	81.88	55.15	177.53	2.00	26.69	0.00	57.09	3317.25
10-Nov-20	80.74	54.62	187.89	1.84	23.95	0.00	58.71	3307.64
11-Nov-20	82.44	54.77	166.37	0.94	29.41	0.00	58.04	3276.54
12-Nov-20	83.78	54.75	177.66	1.68	22.94	0.00	62.48	3334.78
13-Nov-20	77.33	54.52	175.07	1.35	26.74	0.00	64.19	3265.93
14-Nov-20	78.29	53.41	117.57	1.06	23.62	0.00	66.35	2911.34
15-Nov-20	76.68	52.44	95.12	0.69	19.43	0.00	73.08	2790.53
16-Nov-20	89.33	52.63	123.75	1.06	19.01	0.00	71.44	2769.18
17-Nov-20	88.00	53.27	147.86	0.43	29.04	0.00	63.07	2935.17
18-Nov-20	90.43	52.95	159.92	1.37	33.01	0.00	56.56	3083.72
19-Nov-20	87.75	55.41	171.88	1.84	30.23	0.00	56.43	3107.91
20-Nov-20	86.62	55.24	169.87	2.11	40.60	0.00	57.52	3157.40
21-Nov-20	83.58	54.26	176.84	2.26	34.88	0.00	60.56	3127.64
22-Nov-20	77.85	51.51	158.99	1.90	30.28	0.00	57.36	3079.87
23-Nov-20	83.99	53.20	189.31	1.90	34.33	0.00	61.93	3224.16
24-Nov-20	83.74	53.92	187.05	2.28	32.57	0.00	62.37	3276.46
25-Nov-20	83.53	52.67	150.22	1.17	31.62	0.00	65.07	3188.33
26-Nov-20	87.33	53.43	144.60	0.94	25.01	0.00	67.12	3014.04
27-Nov-20	85.31	53.45	134.13	0.45	24.74	0.00	64.64	3017.01
28-Nov-20	86.02	53.41	130.80	0.49	37.92	0.00	63.08	3072.28
29-Nov-20	86.26	53.40	139.21	0.03	30.93	0.00	58.88	3070.16
30-Nov-20	88.75	53.71	158.99	0.47	38.48	0.00	60.92	3199.66
Total	2550.08	1621.07	4860.46	48.62	893.62	0.00	1839.64	95302.83
Source: NLDC								
* Gross Electricity Generation excluding electricity generation from renewables and captive power plants.								
** The volume of bilateral through PXs represents the volume through term-ahead contracts.								
# Scheduled volume of all the bid areas.								

Table-22: PRICE OF SHORT-TERM TRANSACTIONS OF ELECTRICITY (DAY-WISE) (₹/kWh), NOVEMBER 2020									
Market Segment	Day ahead market of IEX			Day ahead market of PXIL			Under Drawl/Over Drawl from the Grid (DSM)		
Date	Minimum ACP	Maximum ACP	Weighted Average Price*	Minimum ACP	Maximum ACP	Weighted Average Price*	All India Grid		
							Minimum Price	Maximum Price	Average Price**
1-Nov-20	2.06	3.33	2.61	2.50	3.83	2.76	0.00	6.30	2.44
2-Nov-20	2.10	4.50	2.91	2.45	4.10	2.79	0.56	8.00	2.73
3-Nov-20	2.24	4.79	3.07	2.45	3.90	2.89	0.00	6.43	2.40
4-Nov-20	2.28	6.00	3.35	2.90	4.45	3.07	0.00	7.11	3.29
5-Nov-20	2.25	6.00	3.34	2.89	5.00	3.26	0.00	8.00	3.09
6-Nov-20	2.06	6.00	3.16	2.50	5.87	3.54	0.00	5.21	2.74
7-Nov-20	2.21	4.15	2.87	2.40	4.64	2.75	0.00	6.05	3.02
8-Nov-20	2.00	3.01	2.59	2.40	4.25	3.16	0.00	6.64	2.60
9-Nov-20	2.26	6.00	3.08	2.40	5.95	2.88	0.00	6.43	2.73
10-Nov-20	2.00	6.00	2.95	1.23	4.95	2.89	0.00	5.43	2.51
11-Nov-20	2.01	4.99	2.79	2.40	6.00	2.96	0.00	6.34	2.81
12-Nov-20	2.10	5.70	3.05	2.24	5.95	3.14	0.00	7.68	3.24
13-Nov-20	2.00	3.86	2.81	2.08	5.95	3.04	0.00	7.01	2.25
14-Nov-20	2.00	2.92	2.43	2.20	2.89	2.50	0.00	8.00	2.87
15-Nov-20	1.00	2.64	2.17	2.10	3.49	2.62	0.00	8.00	3.20
16-Nov-20	2.00	2.80	2.46	2.55	4.99	2.93	0.00	7.65	2.53
17-Nov-20	2.00	4.50	2.77	2.40	3.51	2.96	0.00	5.98	2.71
18-Nov-20	2.00	5.42	2.80	2.40	4.95	2.91	0.00	7.67	2.87
19-Nov-20	2.15	6.00	3.02	2.55	3.49	2.97	0.00	7.04	3.12
20-Nov-20	2.21	5.99	3.03	2.55	4.95	3.03	0.00	7.05	2.97
21-Nov-20	2.20	6.00	3.15	2.40	4.95	3.00	0.00	7.38	3.10
22-Nov-20	2.00	3.07	2.60	2.40	4.25	3.01	0.51	8.00	3.11
23-Nov-20	2.06	4.32	3.01	2.55	4.60	3.13	0.00	8.00	3.52
24-Nov-20	2.00	4.06	3.08	2.55	3.70	2.93	0.00	8.00	3.02
25-Nov-20	1.94	3.49	2.62	2.67	5.95	3.16	0.00	5.95	2.49
26-Nov-20	1.94	3.25	2.57	2.40	3.00	2.68	0.00	8.00	2.28
27-Nov-20	1.30	2.97	2.45	2.26	2.81	2.53	0.00	8.00	2.22
28-Nov-20	1.86	3.50	2.58	2.25	2.55	2.43	0.00	6.96	2.68
29-Nov-20	2.00	3.26	2.58	2.16	3.35	3.20	0.50	6.97	3.01
30-Nov-20	2.00	4.33	2.86	2.29	2.86	2.56	0.54	7.00	2.89
	1.00#	6.00#	2.86	1.23#	6.00#	2.99	0.00#	8.00#	2.81

Source: Data on price of PX transactions from IEX and PXIL and data on DSM Price from NLDC.

* Weighted average price computed based on Area Clearing Volume (ACV) and Area Clearing Price (ACP) for each hour of the day. Here, ACV and ACP represent the scheduled volume and weighted average price of all the bid areas of power exchanges.

** Simple average price of DSM of 96 time blocks of 15 minutes each in a day. DSM price includes Ceiling DSM Rate +40% additional DSM charge.

Maximum/Minimum in the month

Table-23: PRICE OF REAL TIME MARKET TRANSACTIONS OF ELECTRICITY (DAY-WISE) (₹/kWh), NOVEMBER 2020						
Market Segment	Real Time market of IEX			Real Time market of PXIL		
Date	Minimum ACP	Maximum ACP	Weighted Average Price*	Minimum ACP	Maximum ACP	Weighted Average Price*
1-Nov-20	1.50	3.22	2.62	--	--	--
2-Nov-20	2.21	6.00	3.19	--	--	--
3-Nov-20	2.63	6.00	3.43	--	--	--
4-Nov-20	2.60	6.80	3.28	--	--	--
5-Nov-20	0.05	6.00	3.39	--	--	--
6-Nov-20	2.54	6.00	3.05	--	--	--
7-Nov-20	2.58	6.00	3.10	--	--	--
8-Nov-20	1.90	3.15	2.69	--	--	--
9-Nov-20	1.50	4.30	2.76	--	--	--
10-Nov-20	2.20	4.11	2.81	--	--	--
11-Nov-20	2.00	3.70	2.74	--	--	--
12-Nov-20	2.10	6.00	2.92	--	--	--
13-Nov-20	2.00	3.20	2.76	--	--	--
14-Nov-20	1.50	2.75	2.09	--	--	--
15-Nov-20	1.00	2.41	1.98	--	--	--
16-Nov-20	1.00	2.56	1.89	--	--	--
17-Nov-20	1.84	4.00	2.62	--	--	--
18-Nov-20	1.94	5.00	2.91	--	--	--
19-Nov-20	2.20	6.00	3.10	--	--	--
20-Nov-20	2.20	6.00	3.13	--	--	--
21-Nov-20	2.21	4.72	2.95	--	--	--
22-Nov-20	2.28	3.16	2.72	--	--	--
23-Nov-20	2.00	6.05	3.34	--	--	--
24-Nov-20	2.21	4.72	3.02	--	--	--
25-Nov-20	1.90	3.50	2.74	--	--	--
26-Nov-20	1.00	3.12	2.38	--	--	--
27-Nov-20	1.20	3.07	2.34	--	--	--
28-Nov-20	1.59	3.80	2.68	--	--	--
29-Nov-20	0.60	4.00	2.54	--	--	--
30-Nov-20	2.20	3.78	2.89	--	--	--
	0.05#	6.80#	2.85	--	--	--

Source: IEX and PXIL

* Weighted average price computed based on Area Clearing Volume (ACV) and Area Clearing Price (ACP) for each hour of the day. Here, ACV and ACP represent the scheduled volume and weighted average price of all the bid areas of power exchanges.

Maximum/Minimum in the month

Table-24: VOLUME OF SHORT-TERM TRANSACTIONS OF ELECTRICITY (REGIONAL ENTITY*-WISE) (MUs), NOVEMBER 2020										
Name of the Entity	Through Bilateral			Through Power Exchange (DAM + RTM)			Through DSM with Regional Grid			Total Net***
	Sale	Purchase	Net**	Sale	Purchase	Net**	Import (Over Draw)	Export (Under Draw)	Net**	
PUNJAB	699.50	688.59	-10.91	0.00	546.84	546.84	45.77	32.40	13.37	549.31
HARYANA	55.20	117.87	62.67	15.42	181.32	165.90	44.50	33.42	11.08	239.65
RAJASTHAN	9.11	193.75	184.64	77.99	524.94	446.95	87.38	66.18	21.20	652.79
DELHI	120.02	61.08	-58.94	115.97	217.05	101.08	2.24	57.89	-55.64	-13.51
UTTAR P	236.85	74.55	-162.30	298.08	185.85	-112.24	48.72	96.87	-48.15	-322.69
UTTARAKHAND	0.38	72.22	71.85	0.00	361.09	361.09	31.17	18.16	13.01	445.95
HIMACHAL P	8.20	291.46	283.25	109.04	126.80	17.77	28.27	13.87	14.40	315.42
J & K	42.65	0.00	-42.65	0.90	590.23	589.33	45.24	21.78	23.46	570.14
CHANDIGARH	0.00	0.00	0.00	10.20	5.36	-4.84	4.82	3.43	1.38	-3.45
MP	2.97	1099.12	1096.15	226.47	37.39	-189.08	35.01	83.29	-48.28	858.79
MAHARASHTRA	7.89	44.82	36.93	16.32	430.27	413.95	47.83	81.08	-33.25	417.62
GUJARAT	580.48	2.31	-578.18	207.56	357.18	149.61	60.91	60.26	0.65	-427.91
CHHATTISGARH	198.49	99.82	-98.67	403.07	1.31	-401.76	17.66	26.85	-9.19	-509.62
GOA	0.00	10.98	10.98	25.77	11.60	-14.17	6.92	5.63	1.29	-1.89
DAMAN & DIU	0.00	2.39	2.39	0.00	13.49	13.49	7.27	1.24	6.02	21.90
DADRA & NAGAR H	0.00	4.03	4.03	0.77	33.50	32.73	7.36	3.31	4.06	40.82
ANDHRA P	6.45	15.17	8.72	13.76	1000.49	986.73	28.15	44.02	-15.88	979.57
KARNATAKA	28.11	1.57	-26.54	85.43	74.61	-10.81	30.11	80.09	-49.98	-87.34
KERALA	0.00	0.00	0.00	10.01	53.36	43.35	21.86	14.50	7.36	50.72
TAMIL NADU	0.00	779.20	779.20	0.74	542.95	542.20	42.91	69.99	-27.08	1294.32
PONDICHERRY	0.00	0.00	0.00	0.00	0.00	0.00	2.12	13.04	-10.92	-10.92
TELANGANA	155.17	22.62	-132.54	104.25	167.92	63.67	23.37	78.07	-54.70	-123.57
WEST BENGAL	4.12	177.31	173.19	186.77	60.53	-126.24	53.47	17.68	35.79	82.74
ODISHA	19.74	52.69	32.95	449.38	51.11	-398.27	11.69	53.77	-42.07	-407.39
BIHAR	2.39	90.59	88.20	140.86	51.45	-89.41	27.86	63.33	-35.47	-36.68
JHARKHAND	0.00	91.49	91.49	7.88	26.17	18.29	12.68	17.66	-4.98	104.80
SIKKIM	6.13	0.00	-6.13	16.55	0.10	-16.45	2.65	3.51	-0.85	-23.43
DVC	195.39	29.42	-165.97	13.34	8.17	-5.17	27.35	33.08	-5.73	-176.86
ARUNACHAL P	0.00	0.00	0.00	8.88	0.61	-8.26	4.89	2.88	2.01	-6.25
ASSAM	0.00	58.83	58.83	65.37	73.61	8.25	15.77	7.42	8.35	75.42
MANIPUR	4.52	0.00	-4.52	7.95	5.38	-2.57	3.39	1.85	1.54	-5.55
MEGHALAYA	3.52	7.20	3.68	10.75	7.90	-2.84	2.73	4.40	-1.67	-0.84
MIZORAM	0.00	0.00	0.00	4.34	0.00	-4.34	2.08	2.51	-0.43	-4.77
NAGALAND	7.97	0.00	-7.97	0.97	0.00	-0.97	1.57	1.71	-0.13	-9.07
TRIPURA	0.00	0.00	0.00	30.74	0.04	-30.70	0.67	14.11	-13.44	-44.14
NTPC STNS-NR	0.00	0.00	0.00	1.76	0.00	-1.76	48.39	42.88	5.51	3.75
NHPC STNS	0.00	0.00	0.00	0.00	0.00	0.00	16.65	78.36	-61.71	-61.71
NFF	0.00	0.00	0.00	0.00	0.00	0.00	0.04	0.09	-0.05	-0.05
RAIL	0.00	0.00	0.00	0.00	0.00	0.00	10.14	1.96	8.19	8.19
NEP	0.00	0.00	0.00	0.00	0.00	0.00	1.57	0.51	1.06	1.06
NAPP	0.00	0.00	0.00	0.00	0.00	0.00	2.74	0.85	1.89	1.89
RAP B	0.00	0.00	0.00	0.00	0.00	0.00	1.00	1.18	-0.18	-0.18
NJPC	0.00	0.00	0.00	0.00	0.00	0.00	2.05	7.04	-4.99	-4.99
TEHRI	0.00	0.00	0.00	0.00	0.00	0.00	1.80	3.16	-1.35	-1.35
BBMB	0.00	0.00	0.00	0.00	0.00	0.00	4.68	12.92	-8.24	-8.24
RAP C	0.00	0.00	0.00	0.00	0.00	0.00	0.22	3.44	-3.22	-3.22
AD HYDRO	0.00	0.00	0.00	17.03	0.00	-17.03	1.22	1.29	-0.06	-17.09
IGSTPS	0.00	0.00	0.00	0.00	0.00	0.00	4.91	0.72	4.19	4.19
KOTESHWAR	0.00	0.00	0.00	0.00	0.00	0.00	0.52	1.63	-1.11	-1.11
KARCHAM WANGT	0.00	0.00	0.00	18.11	0.00	-18.11	3.04	3.18	-0.14	-18.25
SHREE CEMENT	0.00	0.00	0.00	0.00	0.00	0.00	0.20	0.39	-0.20	-0.20
LANCO BUDHIL	0.00	0.00	0.00	0.88	0.00	-0.88	0.24	0.35	-0.11	-0.98
RAMPUR HEP	0.00	0.00	0.00	0.00	0.00	0.00	0.32	4.65	-4.33	-4.33
SAINJ HEP	0.00	0.00	0.00	11.17	0.00	-11.17	0.30	1.05	-0.75	-11.91
RENEW_SLR	0.00	0.00	0.00	0.00	0.00	0.00	0.68	0.38	0.29	0.29
AZURE_SLR	0.00	0.00	0.00	0.00	0.00	0.00	3.51	0.66	2.85	2.85
SB_SLR	0.00	0.00	0.00	0.00	0.00	0.00	1.62	1.30	0.32	0.32
ACME_SLR	0.00	0.00	0.00	0.00	0.00	0.00	1.60	2.03	-0.43	-0.43
AZURE34_SLR	0.00	0.00	0.00	0.00	0.00	0.00	1.71	0.87	0.84	0.84

TATA_SLR	0.00	0.00	0.00	0.00	0.00	0.00	0.95	1.84	-0.89	-0.89
RENEW_SLR_BKN	0.00	0.00	0.00	0.00	0.00	0.00	3.00	1.57	1.43	1.43
CLEAN_SLR	0.00	0.00	0.00	0.00	0.00	0.00	2.31	4.91	-2.60	-2.60
ARERJL_SLR	0.00	0.00	0.00	0.00	0.00	0.00	2.94	1.25	1.69	1.69
KSMPL_SLR	0.00	0.00	0.00	0.00	0.00	0.00	0.65	0.65	0.01	0.01
ADANI GREEN	0.00	0.00	0.00	2.80	0.00	-2.80	0.00	0.03	-0.03	-2.83
ASEJTL_SLR	0.00	0.00	0.00	0.00	0.00	0.00	0.63	2.88	-2.25	-2.25
SINGOLI BHATWAR	0.00	0.00	0.00	6.59	0.00	-6.59	0.04	0.13	-0.09	-6.68
NTPC STNS-WR	0.00	0.00	0.00	56.92	0.00	-56.92	48.70	121.81	-73.11	-130.03
BHADRAVATHI HV	0.00	0.00	0.00	0.00	0.00	0.00	0.00	0.83	-0.83	-0.83
VINDHYACHAL HV	0.00	0.00	0.00	0.00	0.00	0.00	0.00	0.18	-0.18	-0.18
JINDAL POWER	58.04	0.00	-58.04	167.54	5.26	-162.28	1.68	6.38	-4.70	-225.01
LANKO_AMK	8.28	0.00	-8.28	0.00	0.00	0.00	0.03	4.31	-4.28	-12.57
NSPCL	0.00	0.00	0.00	0.49	0.00	-0.49	2.91	1.64	1.27	0.78
ACBIL	0.72	0.00	-0.72	16.06	0.00	-16.06	3.66	4.82	-1.16	-17.94
BALCO	44.54	0.00	-44.54	16.96	0.00	-16.96	19.52	0.55	18.97	-42.53
RGPPL	0.00	0.00	0.00	0.00	0.00	0.00	14.69	0.25	14.44	14.44
CGPL	0.00	0.00	0.00	0.00	0.00	0.00	37.22	4.04	33.18	33.18
DCPP	0.00	0.00	0.00	0.00	0.00	0.00	0.01	0.02	-0.01	-0.01
EMCO	0.69	0.00	-0.69	116.59	0.00	-116.59	5.98	7.28	-1.30	-118.57
KSK MAHANADI	0.00	0.00	0.00	0.00	0.00	0.00	2.18	1.42	0.76	0.76
ESSAR POWER	120.69	0.00	-120.69	79.14	0.00	-79.14	1.41	3.61	-2.20	-202.03
JINDAL STAGE-II	62.16	0.00	-62.16	116.64	0.00	-116.64	3.04	15.78	-12.74	-191.55
DB POWER	70.93	0.00	-70.93	255.60	0.00	-255.60	8.24	3.90	4.34	-322.19
DHARIWAL POWER	0.00	0.00	0.00	0.72	0.00	-0.72	0.34	2.06	-1.72	-2.45
JAYPEE NIGRIE	27.98	0.00	-27.98	393.64	0.00	-393.64	1.13	6.04	-4.92	-426.55
DGEN MEGA POWER	0.00	0.00	0.00	0.01	0.00	-0.01	1.09	0.00	1.08	1.08
MB POWER	1.92	0.00	-1.92	88.90	0.00	-88.90	8.90	14.46	-5.56	-96.38
MARUTI COAL	0.00	0.00	0.00	38.15	0.56	-37.60	0.00	0.00	0.00	-37.60
SPECTRUM	0.00	0.00	0.00	31.48	0.00	-31.48	0.00	0.00	0.00	-31.48
JHABUA POWER_MH	0.00	0.00	0.00	38.80	0.00	-38.80	9.35	3.83	5.52	-33.28
SASAN UMPP	0.00	0.00	0.00	10.22	0.00	-10.22	0.42	68.35	-67.93	-78.15
TRN ENERGY	6.00	0.00	-6.00	20.58	0.00	-20.58	0.09	4.58	-4.49	-31.07
RKM POWER	0.00	0.00	0.00	119.27	0.00	-119.27	1.79	3.03	-1.24	-120.51
SKS POWER	130.48	0.00	-130.48	13.46	0.39	-13.06	0.74	1.25	-0.52	-144.06
BARC	0.00	0.00	0.00	0.00	0.00	0.00	0.01	2.25	-2.23	-2.23
KAPP 3&4	0.00	0.00	0.00	0.00	3.48	3.48	7.73	5.57	2.16	5.64
HVDC CHAMPA	0.00	0.00	0.00	0.00	0.00	0.00	0.43	0.03	0.40	0.40
MAHINDRA_RUMS	0.00	0.00	0.00	0.00	0.00	0.00	3.59	2.15	1.43	1.43
ARINSUM_RUMS	0.00	0.00	0.00	0.00	0.00	0.00	3.84	2.67	1.18	1.18
OSTRO	0.00	0.00	0.00	0.00	0.00	0.00	4.83	8.49	-3.67	-3.67
ACME_RUMS	0.00	0.00	0.00	0.00	0.00	0.00	2.90	2.53	0.37	0.37
RENEW_BHACHAU	0.00	0.00	0.00	0.00	0.00	0.00	4.09	8.13	-4.04	-4.04
GIWEL_BHUJ	0.00	0.00	0.00	0.00	0.00	0.00	3.96	17.74	-13.78	-13.78
INOX_BHUJ	0.00	0.00	0.00	0.00	0.00	0.00	6.78	2.93	3.85	3.85
AGEMPL_BHUJ	0.00	0.00	0.00	0.00	0.00	0.00	4.54	3.03	1.51	1.51
REGL	199.19	0.00	-199.19	134.01	0.00	-134.01	7.42	5.01	2.41	-330.79
RPREL	413.56	0.00	-413.56	254.81	0.00	-254.81	15.09	10.13	4.96	-663.41
AMPS Hazira	0.00	5.76	5.76	0.00	44.39	44.39	20.73	20.30	0.43	50.58
HVDC RAIGARH	0.00	0.00	0.00	0.00	0.00	0.00	0.09	0.03	0.07	0.07
RGPPL_Others	0.00	0.00	0.00	0.06	0.00	-0.06	0.00	0.00	0.00	-0.06
ALFANAR_BHUJ	0.00	0.00	0.00	0.00	0.00	0.00	2.99	6.94	-3.95	-3.95
RENEW_BHUJ	0.00	0.00	0.00	0.00	0.00	0.00	2.57	3.41	-0.84	-0.84
NTPC STNS-SR	0.00	0.00	0.00	20.11	0.00	-20.11	32.05	31.70	0.35	-19.76
LANKO KONDAPAL	0.00	0.00	0.00	0.00	0.00	0.00	0.45	0.00	0.45	0.45
SIMHAPURI	0.00	0.00	0.00	0.00	0.00	0.00	0.43	0.00	0.43	0.43
MEENAKSHI	0.00	0.00	0.00	0.00	0.00	0.00	0.71	0.00	0.71	0.71
COASTGEN	0.00	0.00	0.00	171.89	0.00	-171.89	8.67	1.76	6.91	-164.98
THERMAL POWER T	0.92	0.00	-0.92	46.53	0.00	-46.53	12.17	1.58	10.59	-36.86
IL&FS	0.00	0.00	0.00	6.36	0.00	-6.36	2.02	0.84	1.185	-5.177
NLC	0.00	0.00	0.00	129.54	0.00	-129.54	18.56	42.93	-24.37	-153.91
SEMBCORP	339.05	0.00	-339.05	277.00	0.00	-277.00	6.82	2.50	4.32	-611.73
NETCL VALLUR	0.00	0.00	0.00	0.00	0.00	0.00	15.25	1.28	13.97	13.97
NTPL	0.00	0.00	0.00	15.55	0.00	-15.55	1.65	1.25	0.40	-15.16
AHSP_ANTP	0.00	0.00	0.00	0.00	0.00	0.00	1.23	1.05	0.18	0.18
AKSP_ANTP	0.00	0.00	0.00	0.00	0.00	0.00	1.15	0.95	0.20	0.20
ABSP_ANTP	0.00	0.00	0.00	0.00	0.00	0.00	1.22	0.97	0.26	0.26

AZURE_ANTP	0.00	0.00	0.00	0.00	0.00	0.00	0.93	0.93	0.00	0.00
TATA_ANTP	0.00	0.00	0.00	0.00	0.00	0.00	2.07	1.53	0.54	0.54
FRV_ANTP	0.00	0.00	0.00	0.00	0.00	0.00	1.77	0.37	1.40	1.40
NTPC_ANTP	0.00	0.00	0.00	0.00	0.00	0.00	5.77	2.82	2.95	2.95
GIWEL_TCN	0.00	0.00	0.00	0.00	0.00	0.00	8.19	7.31	0.88	0.88
MYTRAH_TCN	0.00	0.00	0.00	0.00	0.00	0.00	7.97	3.38	4.60	4.60
FRV_NPK	0.00	0.00	0.00	0.00	0.00	0.00	1.19	0.99	0.20	0.20
ORANGE_TCN	0.00	0.00	0.00	0.00	0.00	0.00	5.99	6.28	-0.29	-0.29
BETAM_TCN	0.00	0.00	0.00	0.00	0.00	0.00	4.73	4.49	0.25	0.25
SBG_PVGD	0.00	0.00	0.00	0.00	0.00	0.00	2.82	3.02	-0.20	-0.20
SBG_NPK	0.00	0.00	0.00	0.00	0.00	0.00	4.10	3.96	0.14	0.14
FORTUM1_PVGD	0.00	0.00	0.00	0.00	0.00	0.00	1.64	1.42	0.22	0.22
PARAM_PVGD	0.00	0.00	0.00	0.00	0.00	0.00	2.12	3.09	-0.97	-0.97
YARROW_PVGD	0.00	0.00	0.00	0.00	0.00	0.00	0.80	1.03	-0.23	-0.23
TATA_PVGD	0.00	0.00	0.00	0.00	0.00	0.00	5.92	6.31	-0.39	-0.39
RENEW_PVGD	0.00	0.00	0.00	0.00	0.00	0.00	0.94	0.83	0.11	0.11
AKS_PVGD	0.00	0.00	0.00	0.00	0.00	0.00	1.02	0.86	0.16	0.16
ARS_PVGD	0.00	0.00	0.00	0.00	0.00	0.00	0.54	0.82	-0.28	-0.28
AVAADA1_PVGD	0.00	0.00	0.00	0.00	0.00	0.00	1.80	2.68	-0.87	-0.87
ADY1_PVGD	0.00	0.00	0.00	0.00	0.00	0.00	0.75	0.81	-0.06	-0.06
ADY2_PVGD	0.00	0.00	0.00	0.00	0.00	0.00	0.61	0.99	-0.38	-0.38
ADY13_PVGD	0.00	0.00	0.00	0.00	0.00	0.00	0.61	1.12	-0.51	-0.51
ADY3_PVGD	0.00	0.00	0.00	0.00	0.00	0.00	0.97	0.75	0.22	0.22
ADY6_PVGD	0.00	0.00	0.00	0.00	0.00	0.00	0.86	1.07	-0.21	-0.21
ADY10_PVGD	0.00	0.00	0.00	0.00	0.00	0.00	0.65	1.14	-0.49	-0.49
AZURE_PVGD	0.00	0.00	0.00	0.00	0.00	0.00	1.30	1.95	-0.65	-0.65
FORTUM2_PVGD	0.00	0.00	0.00	0.00	0.00	0.00	3.09	3.81	-0.72	-0.72
AVAADA2_PVGD	0.00	0.00	0.00	0.00	0.00	0.00	2.14	1.96	0.18	0.18
KREDL_PVGD	0.00	0.00	0.00	0.00	0.00	0.00	0.49	0.82	-0.33	-0.33
AYANA_NPKUNTA	0.00	0.00	0.00	0.00	0.00	0.00	0.95	0.29	0.66	0.66
SPRNG_NPKUNTA	0.00	0.00	0.00	0.00	0.00	0.00	0.14	0.18	-0.04	-0.04
NTPC STNS-ER	0.00	0.00	0.00	24.77	0.00	-24.77	69.97	27.31	42.66	17.89
MAITHON POWER L	0.00	0.00	0.00	0.00	0.00	0.00	5.74	6.96	-1.22	-1.22
NPGC	0.00	0.00	0.00	0.00	0.00	0.00	10.10	2.01	8.09	8.09
ADHUNIK POWER L	91.49	0.00	-91.49	0.00	0.00	0.00	2.52	1.40	1.12	-90.37
CHUZACHEN HEP	15.36	0.00	-15.36	2.42	0.00	-2.42	0.29	0.72	-0.43	-18.21
RANGIT HEP	0.00	0.00	0.00	0.00	0.00	0.00	0.51	1.47	-0.96	-0.96
GMR KAMALANGA	0.00	0.00	0.00	47.01	0.00	-47.01	0.63	4.43	-3.80	-50.81
JITPL	54.13	0.00	-54.13	7.45	0.00	-7.45	0.81	1.68	-0.87	-62.44
TEESTA HEP	0.00	0.00	0.00	0.60	0.00	-0.60	0.06	6.68	-6.62	-7.22
DAGACHU	0.00	0.00	0.00	0.00	0.00	0.00	10.98	0.00	10.98	10.98
JORETHANG	22.86	0.00	-22.86	3.07	0.00	-3.07	3.67	0.89	2.78	-23.15
NEPAL(NVVN)	0.00	17.99	17.99	0.00	0.00	0.00	6.12	1.82	4.30	22.29
BANGLADESH	0.00	58.31	58.31	0.00	0.00	0.00	10.44	3.50	6.94	65.25
HVDC PUS	0.00	0.00	0.00	0.00	0.00	0.00	0.15	0.05	0.10	0.10
TEESTA STG3	0.00	0.00	0.00	253.74	0.00	-253.74	6.83	1.23	5.59	-248.15
DIKCHU HEP	0.00	0.00	0.00	15.42	0.00	-15.42	0.78	1.14	-0.36	-15.78
HVDC ALPD	0.00	0.00	0.00	0.00	0.00	0.00	0.02	0.20	-0.18	-0.18
TASHIDENG HEP	45.43	0.00	-45.43	0.00	0.00	0.00	2.09	0.13	1.97	-43.46
BRBCL,NABINAGAR	0.00	0.00	0.00	11.17	0.00	-11.17	4.47	3.26	1.21	-9.96
MTPS II	0.00	0.00	0.00	0.00	0.00	0.00	2.75	1.08	1.67	1.67
TALA HEP	0.00	0.00	0.00	0.00	0.00	0.00	115.34	0.00	115.34	115.34
CHUKHA HEP	0.00	0.00	0.00	0.00	0.00	0.00	0.31	74.91	-74.61	-74.61
KURICHU HEP	0.00	0.00	0.00	0.00	0.00	0.00	3.98	4.82	-0.84	-0.84
MANGDECHU HEP	0.00	0.00	0.00	0.00	0.00	0.00	4.74	3.49	1.25	1.25
NTPC STNS-NER	0.00	0.00	0.00	2.60	0.00	-2.60	2.61	1.78	0.83	-1.78
NEEPCO STNS	0.00	0.00	0.00	72.52	0.00	-72.52	1.56	9.08	-7.53	-80.05
RANGANADI HEP	0.00	0.00	0.00	0.00	0.00	0.00	0.95	1.63	-0.67	-0.67
DOYANG HEP	0.00	0.00	0.00	0.00	0.00	0.00	0.14	0.49	-0.35	-0.35
ONGC PALATANA	53.07	0.00	-53.07	1.06	0.00	-1.06	1.13	0.98	0.15	-53.98
LOKTAK	0.00	0.00	0.00	0.00	0.00	0.00	0.13	0.39	-0.27	-0.27
PARE HEP	0.00	0.00	0.00	0.00	0.00	0.00	0.30	0.59	-0.29	-0.29
<i>Source: NLDC</i>										
<i>* in case of a state, the entities which are "selling" also include generators connected to state grid and the entities which are "buying" also include open access consumers.</i>										
<i>** (-) indicates sale and (+) indicates purchase,</i>										
<i>*** Total net includes net of transactions through bilateral, power exchange and DSM</i>										

